

**2011 Collection Results for Boone County Landfill**

**Event Material Listings**

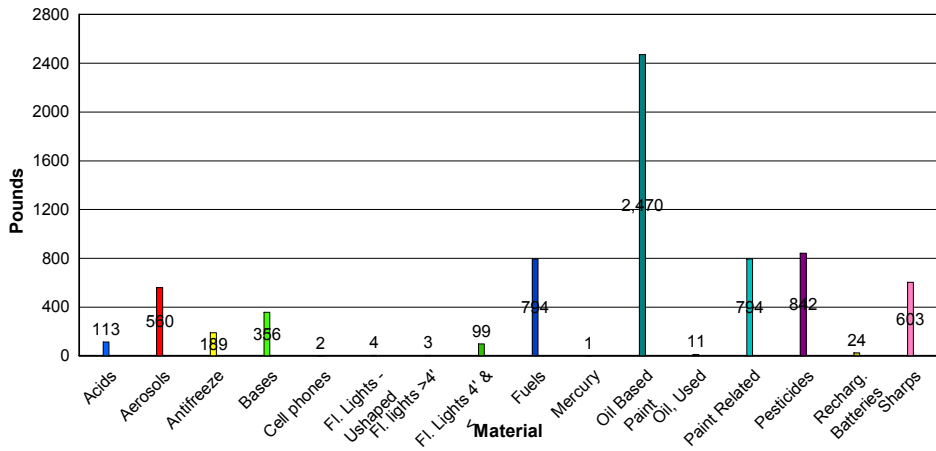
		Acids	Aerosols	Antifreeze	Bases	Cell phones	Fl. Lights - Ushaped	Fl. lights >4'	Fl. Lights 4' & <	Fuels	Mercury	Oil Based Paint	Oil, Used	Paint Related
Boone	2/15/2011	0	81	0	0	0	0	0	8	0	1	619	0	0
	5/28/2011	52	175	20	95	2	0	0	12	262	0	670	11	420
	6/8/2011	0	45	0	81	0	3	0	37	110	0	185	0	116
	8/4/2011	0	51	0	0	0	0	0	0	103	0	0	0	45
	8/23/2011	0	0	0	0	0	0	0	0	0	0	0	0	0
	10/5/2011	0	78	0	64	0	0	0	0	129	0	0	0	0
	12/8/2011	57	92	169	67	0	1	0	31	127	0	781	0	151
Madrid	10/1/2011	4	38	0	49	0	0	3	11	63	0	215	0	62
<b>Year To Date Totals</b>		<b>113</b>	<b>560</b>	<b>189</b>	<b>356</b>	<b>2</b>	<b>4</b>	<b>3</b>	<b>99</b>	<b>794</b>	<b>1</b>	<b>2470</b>	<b>11</b>	<b>794</b>

**Event Total Listings**

City	Order Date	Customers	Total lbs. Collected	Lbs./Vehicle
Boone	2/15/2011	48	848	17.67
Boone	5/28/2011	59	1890	32.03
Boone	6/8/2011	35	791	22.59
Boone	8/4/2011	22	315	14.32
Boone	8/23/2011	1	328	328.00
Boone	10/5/2011	1	271	271.00
Boone	12/8/2011	51	1779	34.87
Madrid	10/1/2011	18	643	35.74
<b>Year To Date Totals</b>		<b>235</b>	<b>6865</b>	<b>29.21</b>

Pesticides	Recharg. Batteries	Sharps	Total lbs. Collected
53	5	81	<b>848</b>
165	6	0	<b>1890</b>
93	0	121	<b>791</b>
116	0	0	<b>315</b>
0	0	328	<b>328</b>
0	0	0	<b>271</b>
223	7	73	<b>1779</b>
192	6	0	<b>643</b>
<b>842</b>	<b>24</b>	<b>603</b>	<b>6865</b>

### Pounds of Material per Waste Stream



### Percent of Material per Waste Stream

