

**2010 Collection Results for Calhoun County - Department of Public Health**

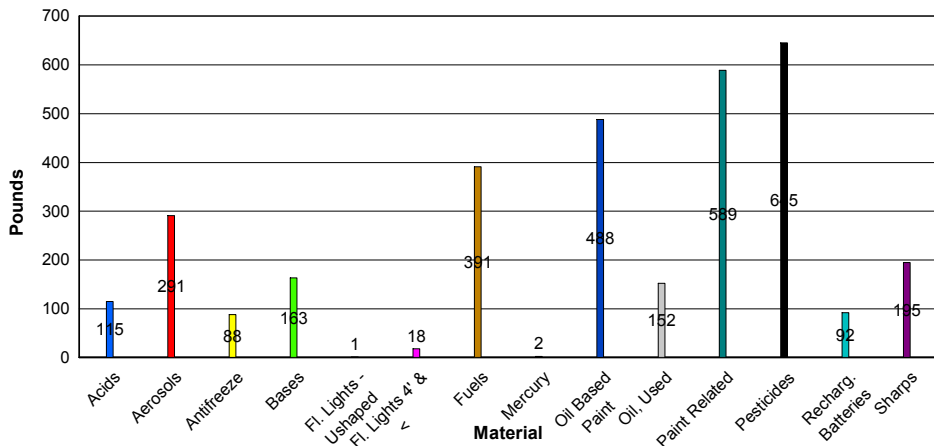
**Event Material Listings**

		Acids	Aerosols	Antifreeze	Bases	Fl. Lights - Ushaped	Fl. Lights 4' & <	Fuels	Mercury	Oil Based Paint	Oil, Used	Paint Related	Pesticides	Recharg. Batteries
Manson	8/14/2010	16	106	15	74	0	0	82	0	132	6	112	245	2
Rockwell City	3/18/2010	0	0	0	0	0	0	0	0	0	0	0	0	0
	6/30/2010	36	67	0	41	0	0	88	0	68	146	252	111	0
	11/9/2010	63	118	73	48	1	18	221	2	288	0	225	289	90
<b>Year To Date Totals</b>		<b>115</b>	<b>291</b>	<b>88</b>	<b>163</b>	<b>1</b>	<b>18</b>	<b>391</b>	<b>2</b>	<b>488</b>	<b>152</b>	<b>589</b>	<b>645</b>	<b>92</b>

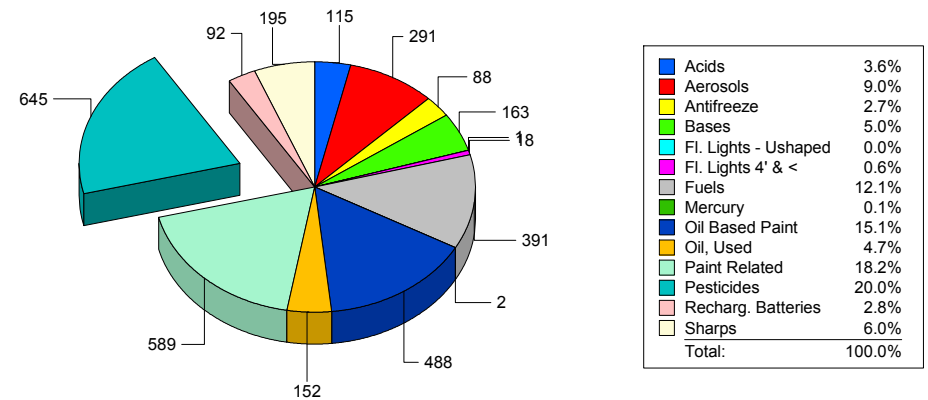
**Event Total Listings**

City	Order Date	Customers	Total lbs. Collected	Lbs./Vehicle
Manson	8/14/2010	19	790	41.58
Rockwell City	3/18/2010	1	143	143.00
Rockwell City	6/30/2010	10	809	80.90
Rockwell City	11/9/2010	25	1488	59.51
<b>Year To Date Totals</b>		<b>55</b>	<b>3230</b>	<b>58.72</b>

**Pounds of Material per Waste Stream**



**Percent of Material per Waste Stream**



Sharps	Total lbs. Collected
0	<b>790</b>
143	<b>143</b>
0	<b>809</b>
52	<b>1488</b>
<b>195</b>	<b>3230</b>