

**2010 Collection Results for North Dallas Solid Waste Planning Commission**

**Event Material Listings**

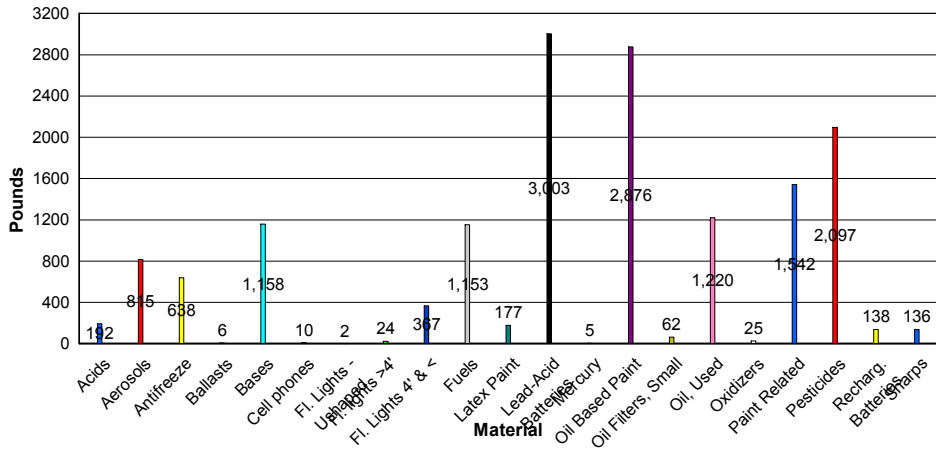
		Acids	Aerosols	Antifreeze	Ballasts	Bases	Cell phones	Fl. Lights - Ushaped	Fl. lights >4'	Fl. Lights 4' & <	Fuels	Latex Paint	Lead-Acid Batteries	Mercury
Adel	1/29/2010	0	0	0	0	0	0	0	0	0	0	0	0	0
	6/5/2010	0	0	0	0	0	0	0	0	0	0	0	0	0
	8/21/2010	0	0	0	0	0	0	0	0	0	0	0	0	0
	11/10/2010	0	0	0	0	0	0	0	0	0	0	0	0	0
Jefferson	8/21/2010	10	188	67	0	92	0	0	3	74	118	84	132	0
Perry	6/5/2010	17	173	90	0	187	2	0	20	32	306	0	297	3
Redfield	2/18/2010	0	0	0	0	0	0	0	0	6	0	0	0	0
Waukee	5/8/2010	148	315	325	6	590	8	2	2	158	640	74	1056	2
	9/11/2010	17	139	156	0	289	0	0	0	97	89	19	1518	0
<b>Year To Date Totals</b>		<b>192</b>	<b>815</b>	<b>638</b>	<b>6</b>	<b>1158</b>	<b>10</b>	<b>2</b>	<b>24</b>	<b>367</b>	<b>1153</b>	<b>177</b>	<b>3003</b>	<b>5</b>

**Event Total Listings**

City	Order Date	Customers	Total lbs. Collected	Lbs./Vehicle
Adel	1/29/2010	9	36	4.00
Adel	6/5/2010	10	26	2.60
Adel	8/21/2010	29	63	2.17
Adel	11/10/2010	6	25	4.17
Jefferson	8/21/2010	63	2094	33.24
Perry	6/5/2010	86	2730	31.74
Redfield	2/18/2010	1	6	6.00
Waukee	5/8/2010	220	6924	31.47
Waukee	9/11/2010	89	3742	42.04
<b>Year To Date Totals</b>		<b>513</b>	<b>15646</b>	<b>30.50</b>

Oil Based Paint	Oil Filters, Small	Oil, Used	Oxidizers	Paint Related	Pesticides	Recharg. Batteries	Sharps	Total lbs. Collected
0	0	0	0	0	0	19	17	<b>36</b>
0	0	0	0	0	0	0	26	<b>26</b>
0	0	0	0	0	0	0	63	<b>63</b>
0	0	0	0	0	0	0	25	<b>25</b>
398	27	68	0	356	455	21	1	<b>2094</b>
532	31	150	0	411	465	14	0	<b>2730</b>
0	0	0	0	0	0	0	0	<b>6</b>
1391	4	681	10	544	920	47	2	<b>6924</b>
555	0	321	15	231	257	37	2	<b>3742</b>
<b>2876</b>	<b>62</b>	<b>1220</b>	<b>25</b>	<b>1542</b>	<b>2097</b>	<b>138</b>	<b>136</b>	<b>15646</b>

### Pounds of Material per Waste Stream



### Percent of Material per Waste Stream

