

2011 Collection Results for South Central Iowa Landfill Agency

Event Material Listings

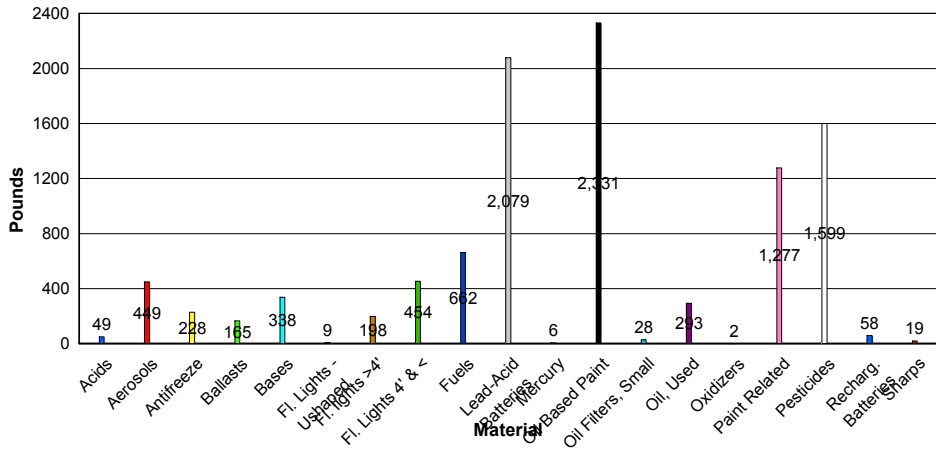
| | | Acids | Aerosols | Antifreeze | Ballasts | Bases | Fl. Lights - Ushaped | Fl. lights >4' | Fl. Lights 4' & < | Fuels | Lead-Acid Batteries | Mercury | Oil Based Paint | Oil Filters, Small |
|----------------------------|------------|-----------|------------|------------|------------|------------|-------------------------|-------------------|----------------------|------------|------------------------|----------|--------------------|-----------------------|
| Dallas Center | 8/6/2011 | 7 | 87 | 114 | 51 | 98 | 4 | 3 | 72 | 109 | 594 | 0 | 176 | 4 |
| Indianola | 5/12/2011 | 0 | 78 | 0 | 0 | 0 | 0 | 96 | 80 | 77 | 33 | 1 | 495 | 0 |
| | 7/14/2011 | 26 | 65 | 4 | 0 | 63 | 4 | 8 | 68 | 83 | 0 | 3 | 329 | 2 |
| | 10/27/2011 | 0 | 0 | 0 | 0 | 0 | 0 | 54 | 76 | 86 | 0 | 0 | 667 | 0 |
| | 12/7/2011 | 2 | 66 | 10 | 0 | 61 | 0 | 3 | 51 | 78 | 33 | 1 | 83 | 0 |
| Van Meter | 10/6/2011 | 0 | 0 | 0 | 0 | 0 | 0 | 0 | 26 | 0 | 0 | 0 | 0 | 0 |
| Winterset | 5/7/2011 | 14 | 138 | 98 | 114 | 116 | 2 | 0 | 80 | 223 | 1419 | 0 | 576 | 22 |
| | 10/6/2011 | 0 | 15 | 2 | 0 | 0 | 0 | 35 | 1 | 6 | 0 | 1 | 5 | 0 |
| Year To Date Totals | | 49 | 449 | 228 | 165 | 338 | 9 | 198 | 454 | 662 | 2079 | 6 | 2331 | 28 |

Event Total Listings

| City | Order Date | Customers | Total lbs. Collected | Lbs./Vehicle |
|----------------------------|------------|------------|-------------------------|--------------|
| Dallas Center | 8/6/2011 | 42 | 1780 | 42.38 |
| Indianola | 5/12/2011 | 9 | 1332 | 148.03 |
| Indianola | 7/14/2011 | 12 | 1132 | 94.29 |
| Indianola | 10/27/2011 | 1 | 1160 | 1,159.75 |
| Indianola | 12/7/2011 | 19 | 548 | 28.84 |
| Van Meter | 10/6/2011 | 10 | 26 | 2.63 |
| Winterset | 5/7/2011 | 58 | 4166 | 71.83 |
| Winterset | 10/6/2011 | 3 | 100 | 33.42 |
| Year To Date Totals | | 154 | 10244 | 66.52 |

| Oil, Used | Oxidizers | Paint Related | Pesticides | Recharg. Batteries | Sharps | Total lbs. Collected |
|------------|-----------|---------------|-------------|--------------------|-----------|----------------------|
| 116 | 2 | 189 | 131 | 23 | 0 | 1780 |
| 0 | 0 | 276 | 190 | 6 | 0 | 1332 |
| 40 | 0 | 269 | 155 | 11 | 2 | 1132 |
| 0 | 0 | 130 | 133 | 0 | 14 | 1160 |
| 0 | 0 | 111 | 37 | 12 | 0 | 548 |
| 0 | 0 | 0 | 0 | 0 | 0 | 26 |
| 135 | 0 | 277 | 946 | 4 | 3 | 4166 |
| 2 | 0 | 25 | 7 | 2 | 0 | 100 |
| 293 | 2 | 1277 | 1599 | 58 | 19 | 10244 |

Pounds of Material per Waste Stream



Percent of Material per Waste Stream

