

## 2010 Collection Results for Shelby County Area Solid Waste Agency

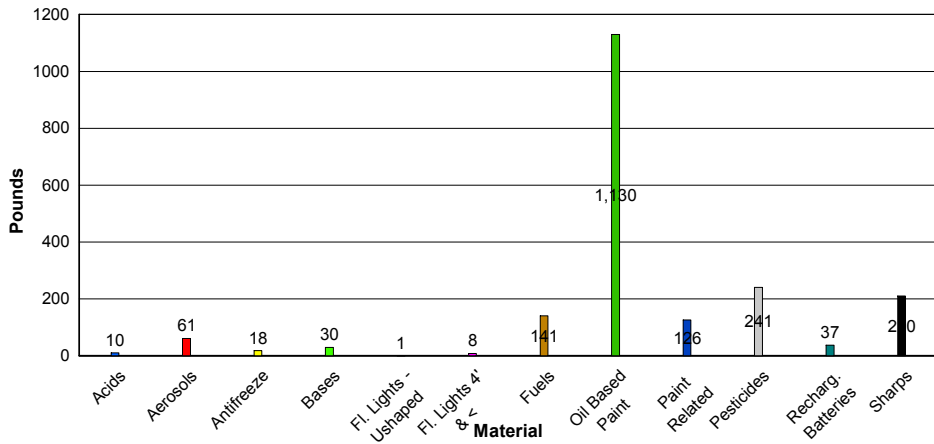
### Event Material Listings

		Acids	Aerosols	Antifreeze	Bases	Fl. Lights - Ushaped	Fl. Lights 4' & <	Fuels	Oil Based Paint	Paint Related	Pesticides	Recharg. Batteries	Sharps	Total lbs. Collected
Harlan	7/24/2010	2	41	18	25	1	1	59	159	126	121	7	0	<b>560</b>
	11/19/2010	8	20	0	5	0	8	82	971	0	120	30	210	<b>1454</b>
<b>Year To Date Totals</b>		<b>10</b>	<b>61</b>	<b>18</b>	<b>30</b>	<b>1</b>	<b>8</b>	<b>141</b>	<b>1130</b>	<b>126</b>	<b>241</b>	<b>37</b>	<b>210</b>	<b>2013</b>

### Event Total Listings

City	Order Date	Customers	Total lbs. Collected	Lbs./Vehicle
Harlan	7/24/2010	30	560	18.65
Harlan	11/19/2010	50	1454	29.07
<b>Year To Date Totals</b>		<b>80</b>	<b>2013</b>	<b>25.16</b>

### Pounds of Material per Waste Stream



### Percent of Material per Waste Stream

