



300 E. Locust Street, Ste. 100  
Des Moines, Iowa 50309  
515-244-0021

## MEMORANDUM

**DATE:** October 16, 2020

**TO:** MWA Board Members

**CC:** MWA Staff

**FROM:** Michael McCoy, Executive Director

**RE:** Wednesday, October 21, 2020, Board Meeting

.....  
This month's board meeting is scheduled for Wednesday, October 21, 2020 at 5:45 pm in the board room at Central Office (300 East Locust Street, Ste. 100, Des Moines, Iowa). If you have questions about any items listed below, please call me at 323-6519 (w) or 707-3869 (c). I look forward to seeing you on Wednesday.

The following numbered items correspond with the number of the item on the agenda:

### **Consent Agenda Items for Approval**

7. **Resolution 10-20-02 – Approval to Purchase Four Semi Tractors at Metro Transfer Stations – Action for Approval**

A request for proposal for four 6x4 semi tractors was released in September of 2020. A total of five (5) responses were received. Staff recommends Truck Center Companies (Freightliner) to be awarded the contract for the four 6x4 automatic semi tractors.

8. **Resolution 10-20-03 – Approval to Purchase Three Transfer Trailers at Metro Transfer Stations - Action for Approval**

A request for proposal for three transfer trailers was released in September of 2020. A total of two (2) responses were received. Staff recommends Ken's Truck Repair (Titan) to be awarded the contract for the three transfer trailers.

### **Regular Agenda Items for Approval**

9. **Resolution 10-20-04 – Approval of Land Acquisition for Metro Park West Landfill– Action Item**

There is currently one access point for staff, visitors, and trucks to access Metro Park West Landfill. This access is the main entrance of the landfill located off 337<sup>th</sup> Street. The primary use of the proposed land for acquisition, with entry from the north side off 335<sup>th</sup> Street, is to create an alternate access road into the facility. The property owner has agreed to sell Metro Waste Authority 2.93 acres for creating this secondary access road. Staff recommends approval.

10. Resolution 10-20-05 – Approval of Material Recovery Facility Prime Contractors – Action Item

Bid documents for the Material Recovery Facility were released September 17, 2020. Metro Waste Authority sought bids from qualified and experienced prime contractors for eleven divisions of construction, which include site/utilities, footings/slabs, landscaping, paving, precast/steel, roofing/flashings, glazing/exterior panels, general construction, elevator, mechanical, and electrical. Bid-opening took place October 15, 2020. Staff recommends the approval of material recovery facility plans, specifications, form of contract, cost estimate, as well as awarding bid packages 01-11 to the identified apparent low prime contractors.



**Board of Directors  
2020 Calendar Year**

**Mark Holm  
Chair**

**Ron Pogge  
Vice-Chair**

Dean O'Connor  
Altoona

Mark Holm  
Ankeny

Wes Enos  
Bondurant

John Edwards  
Clive

Joe Gatto  
Des Moines

Steve Allen  
Elkhart

David Gisch  
Grimes

Tom Cope  
Johnston

Bill Roberts  
Mitchellville

Ed Kuhl  
Norwalk

Dean Cooper  
Pleasant Hill

Rob Sarchet  
Polk City

Tom Hockensmith  
Polk County

Gerald Lane  
Runnells

Ron Pogge  
Urbandale

Steve Gaer  
West Des Moines

Threase Harms  
Windsor Heights

**Michael McCoy  
Executive Director**

**Metro Waste Authority  
Board Meeting  
October 21, 2020**

MWA Central Office  
300 E. Locust Street, Ste. 100, Des Moines, Iowa 50309  
5:45 pm

**Members of the public wishing to attend this meeting in person may do so at the MWA Central Office, where seats will be arranged to allow for social distancing. Masks will be available and are mandatory for public guests. Additional CDC recommendations will be implemented.**

**Agenda**

1. Call to Order, Roll Call
2. Approval of Regular Agenda
3. Public Forum

**CONSENT AGENDA**

*The following are routine items enacted by one roll call vote without separate discussion unless someone, Board or Public, requests an item be removed for consideration:*

4. Approval of Consent Agenda – Items 4 through 8
5. Consideration of Minutes September 16, 2020, Metro Waste Authority Board Meeting – Action for Approval
6. Resolution 10-20-01 – Consideration of September 2020, Monthly Expenditures – Action for Approval
7. Resolution 10-20-02 – Approval to Purchase Four Semi Tractors at Metro Transfer Stations – Action for Approval
8. Resolution 10-20-03 – Approval to Purchase Three Transfer Trailers at Metro Transfer Stations – Action for Approval

**END CONSENT AGENDA**

Regular Agenda Items for Approval – Items 9 and 10

9. Resolution 10-20-04 – Approval of Land Acquisition for Metro Park West Landfill – Action Item
10. Public Hearing to Approve the Plans, Specifications, Form of Contract and Cost Estimate for the Material Recovery Facility and to Award Bidders for Bid Packages 01-11.

Resolution 10-20-05 – Approval of Material Recovery Facility Prime Contractors – Action Item

11. Director's Report

12. Chair's Report
13. General Board Discussion and Other Business
14. Correspondence
15. Adjournment

**November Executive/Finance Meeting:** November 4, 2020, MWA Central Office, 300 E. Locust Street, Ste 100, Des Moines, Iowa 50309, 12:00 pm.

**November Board Meeting:** November 18, 2020, MWA Central Office, 300 E. Locust Street, Ste. 100, Des Moines, Iowa 50309, 5:45 pm.



300 E. Locust Street, Ste. 100  
Des Moines, Iowa 50309  
515-244-0021

## September 16, 2020 Unofficial Metro Waste Authority Board Meeting Minutes

### 1. Call to Order

The meeting was held at Metro Waste Authority's Central Office. Mark Holm, chair, called the September 16, 2020, Metro Waste Authority board meeting to order at 5:46 pm. A quorum was present.

### Roll Call – MWA Board Representatives/Alternates in Attendance

Mark Holm, Ankeny  
John Edwards, Clive  
Joe Gatto, Des Moines  
David Gisch, Grimes  
Tom Cope, Johnston  
Bill Roberts, Mitchellville  
Ed Kuhl, Norwalk  
Dean Cooper, Pleasant Hill  
Rob Sarchet, Polk City  
Tom Hockensmith, Polk County  
Ron Pogge, Urbandale  
Bret Hodne, West Des Moines  
Michael Loffredo, Windsor Heights

### 2. Approval of Regular Agenda

Moved by Clive, seconded by Des Moines, to approve the September 16, 2020, board meeting agenda as presented. Motion carried unanimously by voice vote.

### 3. Public Forum

There were no requests to address the Board.

---

### **CONSENT AGENDA**

*The following are routine items enacted by one roll call vote without separate discussion unless someone, Board or Public, requests that an item be removed for consideration:*

### 4. Approval of Consent Agenda – Items 4 through 8

Moved by Clive, seconded by Des Moines, to approve the Consent Agenda, items 4 through 8.

### 5. Consideration of Minutes of July 15, 2020, Metro Waste Authority Board Meeting – Action for Approval

### 6. Resolution 09-20-01 – Consideration of July 2020, Monthly Expenditures – Action for Approval

### 7. Resolution 09-20-02 – Consideration of August 2020, Monthly Expenditures – Action for Approval

8. Resolution 09-20-03 – Approval of Extension to Revenue Sharing with Respect to the Collection of Solid Waste Agreement – Action for Approval

## END CONSENT AGENDA

---

### Regular Agenda Items for Approval – Items 9 through 12

9. Resolution 09-20-04 – Approval of P-59 Material Recovery Facility Construction Manager Agent – Action Item

Moved by Clive, seconded by Des Moines, to approve Resolution 09-20-04. Motion carried unanimously by voice vote.

Michael McCoy, executive director, introduced Jake Christensen, Christensen Development, to speak on behalf of the Construction Manager Agent (CMA) process.

Christensen reported four qualified firms received a request for proposal, of which, two responded. On August 20, 2020, interviews were held with each entity: Graham Construction and Estes Construction. Christensen firmly recommends Graham due to their experience with similar projects, strong team, and vast majority of industrial development in the area. Adam Douglas, Senior Project Manager for Graham Construction, spoke about the Graham guarantee, a commitment to deadline that results in a 10% overall project cost reimbursement for every day they exceed the target date.

Tom Hockensmith, Polk County, expressed satisfaction surrounding the CMA selection process and role, but questioned Graham's role with subcontractor selection. Douglas reported that Graham takes on a large part of attracting the bids, building the bid packages and distributing to subcontractors. Polk County addressed the number of large projects Graham is working on and their ability to find qualified subs for Metro Waste Authority's (MWA) project. Douglas and Angie Pfannkuch, Christensen Development, both confirmed that quality subcontractors are aware and have been following progress of the MWA material recovery facility.

Joe Gatto, Des Moines, inquired about the ability to monitor labor and payroll of subcontractors; Douglas assured Graham would monitor. Pfannkuch assured the Board that the CMA model offers more transparency, allowing for closer oversight throughout the process.

10. Resolution 09-20-05 – Set Public Hearing for Material Recover Facility Subcontractors on October 21, 2020 – Action Item

Moved by Clive, seconded by Grimes, to approve Resolution 09-20-05. Motion carried unanimously by voice vote.

McCoy reported this item is to set the public hearing during the October board meeting for the material recovery facility subcontractors.

11. Resolution 09-20-06 – Approval of 2013 CAT D8T Dozer Rebuild at Metro Park East Landfill – Action Item

Moved by Clive, seconded by Polk County, to approve Resolution 09-20-06. Motion carried unanimously by voice vote.

McCoy reported the dozers are utilized at Metro Park East Landfill to push garbage at the working face, for spreading cover material, and for excavating cover soil. The

warranty offered on this rebuild is a 10-year, 10,000-hour powertrain, and one-year unlimited hours on all other repairs.

12. Resolution 09-20-07 – Approval of Rate Increase for Electronic Waste Disposal – Action Item

Moved by Grimes, seconded by Des Moines, to approve Resolution 09-20-07. Motion carried unanimously by voice vote.

Kyle Fischer, facility manager at Metro Hazardous Waste Drop-Off, reported Metro Waste Authority (MWA) was informed mid-June that Goodwill would no longer accept recycled electronics disposed of through the hazardous waste program, due to program cuts related to the pandemic. For many years, MWA has partnered with A-Tec recycling for TV recycling and will now utilize A-Tec for all electronic waste, which results in the need to increase disposal rates. The proposed fee to recycle a TV or computer monitor, with a screen size 39" or less, will increase from \$15 to \$20. Likewise, the proposed fee to recycle a TV or computer monitor greater than 39" will increase from \$25 to \$30. Additionally, MWA will now enforce the fee structure for all computer-related equipment, which is \$0.50 per pound.

McCoy reported MWA will continue to assess feasibility of the appliance demanufacturing program to incorporate electronics recycling in the future.

David Gisch, Grimes, inquired how long it's been since MWA adjusted the rates. Fischer reported that it's been close to 10 years. Grimes displayed support for the e-waste fee increase.

13. Director's Report

Chelsie Oxenford, business marketing coordinator, reported MWA is working on separating glass from single stream recycling in anticipation of the new material recovery facility (MRF). Removing glass from single stream will help preserve the MRF equipment and increase the value of other recyclable material. Glass recycling has been identified as an environmental management system (EMS) objective for FY20/21. MWA now has five drop-off locations available, four at MWA facilities and a trailer placed with the agency's first community partner, Windsor Heights. MWA will continue to assess utilization of glass drop-offs and determine need for additional container placement throughout the metro.

Leslie Irlbeck, deputy director, reported a committee has been formed to continue designing the education center at the MRF. MWA has partnered with the Waukee Innovation and Learning Center, including students and teachers, to build out a collaborative space to serve multiple populations.

McCoy reported a save the date will be coming soon for the MRF groundbreaking to be held Tuesday, October 20, 2020.

McCoy reported the public affairs department is working on the 2020 staff service awards, scheduled for Saturday, October 17, 2020.

McCoy reported a committee will be assembled for the FY19/20 audit committee. More information will be sent via email.

The October executive finance meeting will be held at Central Office (300 E. Locust St., Ste. 100, Des Moines, Iowa) on October 7, 2020, at 12:00 pm.

The October board meeting will be held at Central Office (300 E. Locust St. Ste. 100, Des Moines, Iowa) on October 21, 2020, at 5:45 pm.

14. Chair's Report

Mark Holm, chair, reported Metro Waste Authority board meetings have been and will continue to be open to the public with restrictions for those participating in-person. MWA will continue to utilize Zoom as the primary platform for monthly board meetings.

Holm reported MWA has a grinder for yard waste available for communities to use to grind material from the derecho.

15. General Board Discussion and Other Business

Mark Holm, Ankeny, reported disappointment in municipal trash collection for some residents of Ankeny after the derecho. The City of Ankeny will continue to assess ways to mitigate these issues in the future.

Michael McCoy, executive director, reported MWA participates in pilot payments, and plans to readdress with the Board in the coming months. Pilot payments are based on MWA facilities located in a municipality.

Adjournment

Meeting adjourned at 6:29 pm.

---

Michael McCoy, Executive Director

---

Mark E. Holm, Chair



METRO WASTE AUTHORITY  
BILLS PAID IN SEPTEMBER 2020

Vendor	Services Provided	Amount
A TECH	Security	380.70
ACCESS SYSTEMS	Office printing	332.50
ACCURATE COMMERCIAL	P60 cold storage building	254,312.15
ADVENTURE LIGHTING	Site maintenance	79.35
AERATION INDUSTRIES	CWTS	2,995.00
ALL FORMS	Office supplies	274.34
ALL OUTDOOR POWER	Parts/small tools/supplies	220.90
ALLENDER BUTZKE	Engineering fees	1,815.20
AMERICAN SECURITY	Security	499.84
APPLIED INDUSTRIAL	Parts	196.57
ARAMARK	Rags/mats/supplies	591.90
ASPEN WASTE	Curbside/drop off/waste collection	3,785.87
ATLANTIC BOTTLING	Office supplies	28.05
AUREON	Telephone expense	8,619.42
BOMGAARS	Parts/small tools/supplies	47.06
BOOT BARN	Health/safety	5,011.00
CAPITAL CITY EQUIPMENT	Equipment/parts/labor	114.38
CENTRAL UNITED	Life insurance	274.49
CHAMPLIN TIRE RECYCLING	Tire processing	6,394.05
CHRISTENSEN DEVELOPMENT	Consulting fees	60,000.00
CITY OF BONDURANT	Utilities	135.11
CITY OF DES MOINES	Lease/leachate processing	26,500.02
CITY OF GRIMES	Utilities	1,668.63
CLEAN HARBORS ENVIRONMENTAL SERVICE	Contract disposal	4,078.43
COMMONWEALTH ELECTRIC	Site maintenance	1,369.02
CONSTRUCTION & AGGREGATE PRODUCTS	Leachate maintenance/collection	362.52
CONTROLLED ACCESS	Site maintenance	1,267.21
CPI	Phone system	3,020.00
CRYSTAL CLEAR	Office supplies	67.00
CSG FORTE	Processing fees	180.00
CUMMINS	Dues/subscription/fee	770.00
DARYLE J BENNETT II	Building services	275.00
DEERY BROTHERS	Parts/labor	40.74
DEJEAR	Yard carts	14,000.00
DES MOINES MOBILE WASH	Preventive maintenance	874.50
DES MOINES WATER WORKS	Utilities	547.83
ELECTRONIC ENGINEERING	Parts	687.13
ELITE ELECTRIC	Bldg repairs/site maintenance	6,525.16
ELITE GLASS	Building services	3,621.95
ELIZABETH MCCOY	Yard cart delivery	800.00
ELLIOTT EQUIPMENT	Parts/labor	4,898.55
EXPRESS LAUNDRY	Floor mats	125.00
EXPRESS TARP	Litter control	1,995.00
FINISHING TOUCHEZ	Site maintenance	113.75

FLYNN WRIGHT	Public information/promotion	28,754.50
FREIGHTLINER	Parts	55.78
GRACE LABEL	Outside printing	5,688.60
GRAINGER	Parts/small tools/supplies	369.78
GRP	Contract disposal	732.00
HANIFEN	Parts/labor	272.50
HDR	Engineering services	18,686.66
HEALTHCARE MARKETING MAKEOVERS	Public information/promotion	350.00
HEARTLAND CO-OP	Equipment fuel	16,747.77
HEAVY HIGHWAY FRINGE BENEFIT	Medical insurance	675.00
HILLTOP TIRE	Equipment maintenance	57.64
HIRE QUALITY SOLUTIONS	Temporary labor	757.10
HOUSBY HEAVY EQUIPMENT	Parts/labor/preventive maintenance	885.36
HOUSBY MACK	Parts/labor/preventive maintenance	3,327.48
I & S	MRF topographical survey	9,500.00
IMAGE 360	Building services	130.54
IMWCA	WC insurance	30,990.00
IA DNR	DNR Quarterly Tonnage Fees	393,269.40
IOWA DES MOINES SUPPLY	Janitorial supplies	969.42
IOWA LABORERS' DISTRICT COUNCIL	Medical insurance	30,293.10
IOWA PUMP	Leachate maintenance/collection	2,152.19
IPERS	Employer's share of IPERS	41,347.42
J A KING	Site maintenance/parts	35,350.00
JOEL T BUCKLIN	Parts	966.00
JOHNSTON SUPPLY	Site maintenance	117.69
JONES LANG LASALLE	HDR expansion	4,967.61
KABEL BUSINESS SERVICES	HRA disbursements/fees	4,239.96
KARL CHEVROLET	Parts/labor	32,439.40
KOCH BROTHERS	Office supplies	1,321.67
LARRY'S WINDOW	Building services	1,485.00
LUBE-TECH	Equipment fuel	362.34
MANAGEMENT PROFESSIONALS	Property management fee/site maintenance	5,244.29
MARSDEN	Janitorial services	764.26
MARTIN MARIETTA	Site maintenance	11,858.06
MENARDS	Supplies	350.70
MHC KENWORTH	Parts/labor/preventive maintenance	1,095.65
MIDAMERICAN ENERGY	Utilities	15,291.49
MIDLAND POWER	Utilities	1,159.01
MIDWEST WHEEL	Parts	3,142.24
MMC CONTRACTORS	Bldg repairs/site maintenance	2,233.67
MOTOR PARTS	Parts/small tools/supplies	414.10
NAPA	Parts/small tools/supplies	228.13
NATIONWIDE OFFICE CLEANERS	Janitorial services	1,202.85
NOLAN MUENCH	Yard cart delivery	800.00
NTT CLOUD	Telephone expense	261.11
ONE SOURCE	Background checks	34.30
O'REILLY	Parts/small tools/supplies	321.53
P & P SMALL ENGINES	Parts	190.96
PABCO	Yard waste bags	55,952.20

PER MAR	Security	110.00
PETERBILT	Parts/labor/preventive maintenance	97.54
PETERSON CONTRACTORS	Contracted fly ash hauler	14,268.45
POLK COUNTY TREASURER	Property taxes	90,379.00
POMP'S TIRE	Tire/track repairs	5,360.65
PROSPERITY JANITORIAL	Janitorial services	2,676.79
QUICK OIL	Equipment fuel	40,173.68
REHRIG	Curbside cart expense/repair	107,892.58
RELIANCE STANDARD	Insurance premium	3,273.38
RSM US	Consulting/professional service/dues	15,856.02
SCOTT'S AUTO GLASS	Parts/labor	880.00
SCS FIELD SERVICES	Engineering services	5,800.00
SINK PAPER	Yard bag storage/distribution	9,107.70
SMITH'S SEWER	Site maintenance	358.00
SOCIAL SECURITY ADMINISTRATION	Employer's share of FICA	33,545.44
SOIL CONTROL LAB	Environmental monitoring	349.00
SUMMIT COMPANIES	Fire extinguisher	475.00
TIFCO	Parts/small tools/supplies	568.61
TITAN	Parts	442.13
TREASURER STATE OF IOWA	Sales tax	7,078.92
TRUENORTH	Dues/subscription/fee	2,500.00
UPS	Mailing expense	138.03
URBANDALE PUBLIC WORKS	Yard waste collection	50,432.41
VALLEY ENVIRONMENTAL	Contract disposal	384.00
VAN WALL	Parts/labor/preventive maintenance	125.54
VANTAGEPOINT TRANSFER AGENTS	Employer's share deferred compensation	9,195.78
VERMEER	Parts	456.00
WASTE CONNECTIONS	Waste collection/tire processing	11,360.45
WASTE MANAGEMENT	Curbside/drop off/waste collection	438,219.01
WASTE MANAGEMENT	Yard waste collection	95,219.60
WEST BANK	Credit card payment for misc office and travel expense:	10,268.64
WEST BANK	Employee service awards	2,410.00
WEST BANK	Service fees	93.54
WEST DES MOINES PARKS AND RECREATION	MWA grant	10,000.00
WEX	Fuel	2,820.33
WIXTED	Consulting fees	2,050.00
WOODRUFF CONSTRUCTION	Cold storage building	319,837.45
XENIA	Utilities	74.98
ZIEGLER	Part/labor/preventive maintenance/subscription	22,057.93
Grand Total		2,504,038.36

The MWA Executive Director and the Director of Finance certify that the above MWA bills paid are properly due and have been made in accordance with the operating and expenditure processes established by MWA.

  
Michael McCoy, Executive Director

  
Joel Etienne, Finance Administrator

**Metro Waste Authority Board**  
**Monthly Board Meeting**  
**October 21, 2020**  
**CONSENT AGENDA ITEM 7**

---

**ITEM:**

Approval to Purchase Four Semi Tractors at Metro Transfer Stations.

**SUMMARY:**

A request for proposal for four 6x4 semi tractors was released in September of 2020. A total of five (5) responses were received. The proposals were evaluated by Metro Waste Authority (MWA) staff.

**DISCUSSION POINTS:**

The following vendors submitted bids:

<b>Name:</b>	<b>Manufacturer:</b>
Truck Center Companies	Freightliner
O'Halloran	International
MHC	Kenworth
Peterbilt of Des Moines	Peterbilt
Housby Mack	Mack

Staff used a scoring system that included the following criteria:

- Conformity to Bid Specifications
- Machine Job Performance
- Warranty Provided
- Bid Price
- Parts and Service Provided
- Previous Experience with Bidder
- Machine Delivery

Truck Center Companies received the highest score and was also low tractor bid.

**STAFF RECOMMENDATION:**

Staff recommends Truck Center Companies (Freightliner) to be awarded the contract for the four 6x4 automatic semi tractors.

**HISTORY/PROJECT ANALYSIS:**

Internal mechanics and drivers assisted in the creation of a process that captured the equipment needs and requirements, which resulted with review of the five bids received. Freightliners have been purchased in the past and have proven to be quality tractors with exceptional service. Based on historical efficiencies and practices, the MWA mechanics involved with the review recommend the extended warranty. The extended warranty includes an upgrade from the standard two year engine and after treatment to a seven year, and a five year transmission/unlimited mile.

**BUDGET REQUIREMENTS:**

The proposed pricing of \$131,253 per tractor is under the budgeted amount of \$160,000 per tractor. Adding the extended warranty increases the price per tractor to \$148,964, but the price still remains under budget by \$11,036 per tractor.

Total price for all five tractors is \$595,856.

**ATTACHMENTS:**

Attachment A – Bid evaluation

Attachment B - Cost comparison

Attachment C – “Truck Centers Companies” (Freightliner) Quote

**CONTACT:**

Judi Mendenhall, director of recycling and diversion, 515.333.4430

**Attachment A**  
**Bid Evaluation**

	Conformity To Bid Specifications	Machine Job Performance	Warranty Provided	Lowest Bid Price	Parts & Service Provided	Previous Experience with Bidder	Machine Delivery	TOTAL	AVERAGE
Maximum Points	60	60	10	30	10	10	40	220	
Truck Center Companies									
AC	60	55	8	30	10	10	35	208	<b>214</b>
JL	60	60	10	30	10	10	40	220	
JM	60	55	10	30	10	10	38	213	
MHC Kenworth									
AC	60	55	10	25	10	10	35	205	<b>206</b>
JL	55	55	10	25	10	10	40	205	
JM	60	55	8	24	10	10	40	207	
Peterbilt									
AC	60	55	8	20	8	9	30	190	<b>182</b>
JL	55	55	5	10	5	5	30	165	
JM	55	55	8	20	8	8	38	192	
Ohalloran Intl									
AC	60	45	10	28	5	8	35	191	<b>178</b>
JL	40	50	10	25	10	5	25	165	
JM	55	55	8	26	5	5	25	179	
Housby Mack									
AC	40	50	7	28	4	5	30	164	<b>171</b>
JL	50	50	5	25	10	10	35	185	
JM	45	40	8	28	2	5	35	163	

Attachment B  
**Cost Comparison**

<b>Vendor</b>	<b>Tractor Price</b>
Truck Center Companies-Freightliner	\$131,253
O'halloran Intl.	\$135,400
Peterbilt of DM	\$146,205
MHC-Kenworth	\$137,600
Housby Mack	\$135,200

Prepared for:  
Judi Mendenhall  
METRO WASTE AUTHORITY  
12181 NE 12TH AVE  
MITCHELLVILLE, IA 50169  
Phone: 515.333.4430

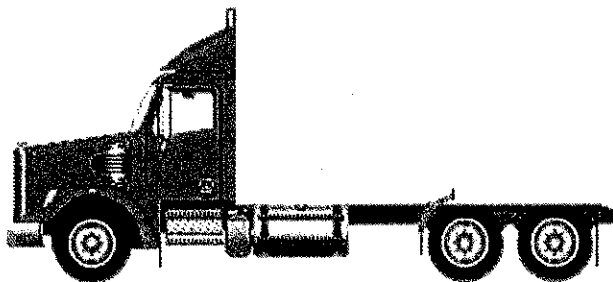
Page 16 of 53  
Prepared by:  
Jordan Miller  
TRUCK CENTER COMPANIES  
3601 ADVENTURELAND DRIVE  
ALTOONA, IA 50009  
Phone: 515.650.7852

*A proposal for*  
**METRO WASTE AUTHORITY**

*Prepared by*  
**TRUCK CENTER COMPANIES**  
*Jordan Miller*

*Oct 08, 2020*

**Freightliner SD**



Components shown may not reflect all spec'd options and are not to scale



**Prepared for:**  
 Judi Mendenhall  
 METRO WASTE AUTHORITY  
 12181 NE 12TH AVE  
 MITCHELLVILLE, IA 50169  
 Phone: 515.333.4430

**Prepared by:**  
 Jordan Miller  
 TRUCK CENTER COMPANIES  
 3601 ADVENTURELAND DRIVE  
 ALTOONA, IA 50009  
 Phone: 515.650.7852

## Q U O T A T I O N

### 122SD CONVENTIONAL CHASSIS

SET BACK AXLE - TRACTOR DETROIT DD13 12.8L 450 HP @ 1625 RPM, 1900 GOV RPM, 1650 LB/FT @ 975 RPM ALLISON 4700 RDS AUTOMATIC TRANSMISSION WITH PTO PROVISION MT-40-14X 40,000# R-SERIES TANDEM REAR AXLE AIRLINER 46,000# REAR SUSPENSION DETROIT DA-F-12.0-3 12,000# FF1 71.5 KPI/3.74 DROP SINGLE FRONT AXLE	12,000# DUAL TAPERLEAF FRONT SUSPENSION 122 INCH BBC ALUMINUM CONVENTIONAL CAB 5150MM (203 INCH) WHEELBASE HOLLAND FW33 SERIES LO-LUBE FLAT PLATE STATIONARY FIFTH WHEEL 11/32X3-1/2X10-3/16 INCH STEEL FRAME (8.73MMX258.8MM/0.344X10.19 INCH) 120KSI 1450MM (57 INCH) REAR FRAME OVERHANG
---	--

		PER UNIT	TOTAL
VEHICLE PRICE	TOTAL # OF UNITS (4)	\$ 120,266	\$ 481,064
EXTENDED WARRANTY		\$ 17,711	\$ 70,844
DEALER INSTALLED OPTIONS		\$ 10,987	\$ 43,948
<b>CUSTOMER PRICE BEFORE TAX</b>		<b>\$ 148,964</b>	<b>\$ 595,856</b>

### TAXES AND FEES

TAXES AND FEES	\$ 0	\$ 0
OTHER CHARGES	\$ 0	\$ 0

### TRADE-IN

<b>TRADE-IN ALLOWANCE</b>	\$ (0)	\$ (0)
---------------------------	--------	--------

<b>BALANCE DUE</b>	<b>(LOCAL CURRENCY)</b>	<b>\$ 148,964</b>	<b>\$ 595,856</b>
--------------------	-------------------------	-------------------	-------------------

### COMMENTS:

Projected delivery on \_\_\_ / \_\_\_ / \_\_\_ provided the order is received before \_\_\_ / \_\_\_ / \_\_\_.

### APPROVAL:

Please indicate your acceptance of this quotation by signing below:

Customer: X \_\_\_\_\_ Date: \_\_\_ / \_\_\_ / \_\_\_.

**Daimler Truck Financial**

Financing that works for you.

See your local dealer for a competitive quote from Daimler Truck Financial, or contact us at [Information@dtff.com](mailto:Information@dtff.com).

Daimler Truck Financial offers a variety of finance, lease and insurance solutions to fit your business needs. For more information about our products and services, visit our website at [www.daimler-truckfinancial.com](http://www.daimler-truckfinancial.com).



Prepared for:  
Judi Mendenhall  
METRO WASTE AUTHORITY  
12181 NE 12TH AVE  
MITCHELLVILLE, IA 50169  
Phone: 515.333.4430

Page 18 of 53  
Prepared by:  
Jordan Miller  
TRUCK CENTER COMPANIES  
3601 ADVENTURELAND DRIVE  
ALTOONA, IA 50009  
Phone: 515.650.7852

## S P E C I F I C A T I O N   P R O P O S A L

Data Code	Description	Weight Front	Weight Rear	Retail Price
<b>Price Level</b>				
PRL-23D	SD PRL-23D (EFF:01/21/20)			STD
<b>Data Version</b>				
DRL-034	SPECPRO21 DATA RELEASE VER 034			N/C
<b>Vehicle Configuration</b>				
001-241	122SD CONVENTIONAL CHASSIS	9,184	6,716	\$173,960.00
004-221	2021 MODEL YEAR SPECIFIED			STD
002-002	SET BACK AXLE - TRACTOR			STD
003-001	LH PRIMARY STEERING LOCATION			STD
<b>General Service</b>				
AA1-001	TRACTOR/TRAILER CONFIGURATION			STD
AA6-001	DOMICILED, USA 50 STATES (INCLUDING CALIFORNIA AND CARB OPT-IN STATES)			STD
A85-011	CONSTRUCTION SERVICE			N/C
A84-1GM	GOVERNMENT BUSINESS SEGMENT			N/C
AA4-003	DRY BULK COMMODITY			N/C
AA5-006	TERRAIN/DUTY: 10% (SOME) OF THE TIME, IN TRANSIT, IS SPENT ON NON-PAVED ROADS			N/C
AB1-008	MAXIMUM 8% EXPECTED GRADE			STD
AB5-003	MAINTAINED GRAVEL OR CRUSHED ROCK - MOST SEVERE IN-TRANSIT (BETWEEN SITES) ROAD SURFACE			N/C
995-1AE	FREIGHTLINER LEVEL II WARRANTY			N/C
A66-99D	EXPECTED FRONT AXLE(S) LOAD : 12000.0 lbs			
A68-99D	EXPECTED REAR DRIVE AXLE(S) LOAD : 40000.0 lbs			
A63-99D	EXPECTED GROSS VEHICLE WEIGHT CAPACITY : 52000.0 lbs			
A70-99D	EXPECTED GROSS COMBINATION WEIGHT : 80000.0 lbs			
<b>Truck Service</b>				
AF3-2CR	TRACTOR ONLY WITH NO BODY UPFIT			STD



Prepared for:  
 Judi Mendenhall  
 METRO WASTE AUTHORITY  
 12181 NE 12TH AVE  
 MITCHELLVILLE, IA 50169  
 Phone: 515.333.4430

Prepared By:  
 Jordan Miller  
 TRUCK CENTER COMPANIES  
 3601 ADVENTURELAND DRIVE  
 ALTOONA, IA 50009  
 Phone: 515.650.7852

Data Code	Description	Weight Front	Weight Rear	Retail Price
<b>Tractor Service</b>				
AA2-006	DRY BULK TRAILER			N/C
AH6-001	SINGLE (1) TRAILER			STD
<b>Engine</b>				
101-2YA	DETROIT DD13 12.8L 450 HP @ 1625 RPM, 1900 GOV RPM, 1650 LB/FT @ 975 RPM	-280	-10	(\$2,988.00)
<b>Electronic Parameters</b>				
79A-070	70 MPH ROAD SPEED LIMIT			N/C
79B-000	CRUISE CONTROL SPEED LIMIT SAME AS ROAD SPEED LIMIT			N/C
79M-002	PTO MODE BRAKE OVERRIDE - SERVICE BRAKE APPLIED OR PARK BRAKE NOT APPLIED			N/C
79R-001	PTO MODE COOLING FAN ENABLE			N/C
79T-001	PTO MODE RPM INCREMENT - 25 RPM			N/C
79W-001	ONE REMOTE PTO SPEED			N/C
79X-003	PTO SPEED 1 SETTING - 800 RPM			N/C
80D-001	SOFT CRUISE CONTROL ENABLED			N/C
<b>Engine Equipment</b>				
99C-017	2016-2019 ONBOARD DIAGNOSTICS/2010 EPA/CARB/FINAL GHG17 CONFIGURATION			STD
99D-011	2008 CARB EMISSION CERTIFICATION - CLEAN IDLE (INCLUDES 6X4 INCH LABEL ON LOWER FORWARD CORNER OF DRIVER DOOR)			\$109.00
13E-001	STANDARD OIL PAN			STD
105-001	ENGINE MOUNTED OIL CHECK AND FILL			STD
014-1CP	DUAL SIDE OF HOOD AIR INTAKE WITH ENGINE MOUNTED HIGH CAPACITY AIR CLEANER			STD
124-1D7	DR 12V 160 AMP 28-SI QUADRAMOUNT PAD ALTERNATOR WITH REMOTE BATTERY VOLT SENSE			STD
292-236	(3) DTNA GENUINE, FLOODED STARTING, MIN 3000CCA, 555RC, THREADED STUD BATTERIES			STD
290-1D3	STEEL BATTERY BOX WITH ENCLOSED TRAY			STD
282-001	SINGLE BATTERY BOX FRAME MOUNTED LH SIDE UNDER CAB			STD
291-017	WIRE GROUND RETURN FOR BATTERY CABLES WITH ADDITIONAL FRAME GROUND RETURN			STD
289-006	PLASTIC BATTERY BOX COVER			STD
293-058	POSITIVE LOAD DISCONNECT WITH CAB MOUNTED CONTROL SWITCH MOUNTED OUTBOARD DRIVER SEAT	8		\$139.00

Prepared for:  
Judi Mendenhall  
METRO WASTE AUTHORITY  
12181 NE 12TH AVE  
MITCHELLVILLE, IA 50169  
Phone: 515.333.4430

Page 20 of 53  
Prepared by:  
Jordan Miller  
TRUCK CENTER COMPANIES  
3601 ADVENTURELAND DRIVE  
ALTOONA, IA 50009  
Phone: 515.650.7852

Data Code	Description	Weight Front	Weight Rear	Retail Price
295-029	POSITIVE AND NEGATIVE POSTS FOR JUMPSTART LOCATED ON FRAME NEXT TO STARTER	2		\$118.00
107-044	BW MODEL BA-921 19.0 CFM SINGLE CYLINDER AIR COMPRESSOR WITH SAFETY VALVE			STD
131-013	AIR COMPRESSOR DISCHARGE LINE			STD
152-041	ELECTRONIC ENGINE INTEGRAL SHUTDOWN PROTECTION SYSTEM			STD
128-002	JACOBS COMPRESSION BRAKE			STD
016-1C2	RH OUTBOARD UNDER STEP MOUNTED HORIZONTAL AFTERTREATMENT SYSTEM ASSEMBLY WITH RH B-PILLAR MOUNTED VERTICAL TAILPIPE			STD
28F-002	ENGINE AFTERTREATMENT DEVICE, AUTOMATIC OVER THE ROAD REGENERATION AND DASH MOUNTED REGENERATION REQUEST SWITCH			STD
239-038	11 FOOT 06 INCH (138 INCH+0/-5.9 INCH) EXHAUST SYSTEM HEIGHT			STD
237-1CR	RH CURVED VERTICAL TAILPIPE B-PILLAR MOUNTED ROUTED FROM STEP			STD
23U-003	23 GALLON DIESEL EXHAUST FLUID TANK			STD
30N-003	100 PERCENT DIESEL EXHAUST FLUID FILL			STD
43X-001	LH HEAVY DUTY STANDARD DIESEL EXHAUST FLUID TANK LOCATION			STD
43Y-001	STANDARD DIESEL EXHAUST FLUID TANK CAP			STD
242-001	STAINLESS STEEL AFTERTREATMENT DEVICE/MUFFLER/TAILOPIPE SHIELD			\$11.00
273-036	BORG WARNER (KYSOR) REAR AIR ON/OFF ENGINE FAN CLUTCH			STD
276-002	AUTOMATIC FAN CONTROL WITH DASH SWITCH AND INDICATOR LIGHT, NON ENGINE MOUNTED			\$10.00
110-068	DDC SUPPLIED ENGINE MOUNTED FUEL FILTER/FUEL WATER SEPARATOR WITH WATER-IN-FUEL INDICATOR			STD
118-001	FULL FLOW OIL FILTER			STD
266-057	1500 SQUARE INCH ALUMINUM RADIATOR			STD
103-039	ANTIFREEZE TO -34F, OAT (NITRITE AND SILICATE FREE) EXTENDED LIFE COOLANT			STD
171-007	GATES BLUE STRIPE COOLANT HOSES OR EQUIVALENT			STD
172-001	CONSTANT TENSION HOSE CLAMPS FOR COOLANT HOSES			STD

**Prepared for:**  
 Judi Mendenhall  
 METRO WASTE AUTHORITY  
 12181 NE 12TH AVE  
 MITCHELLVILLE, IA 50169  
 Phone: 515.333.4430

**Prepared by:**  
 Jordan Miller  
 TRUCK CENTER COMPANIES  
 3601 ADVENTURELAND DRIVE  
 ALTOONA, IA 50009  
 Phone: 515.650.7852

Data Code	Description	Weight Front	Weight Rear	Retail Price
270-023	HDEP FIXED RATIO COOLANT PUMP AND RADIATOR DRAIN VALVE			STD
168-003	STEEL LOWER RADIATOR AND OIL PAN GUARDS	105	-5	\$439.00
138-005	PHILLIPS-TEMRO 1500 WATT/115 VOLT BLOCK HEATER	4		\$128.00
140-022	CHROME ENGINE HEATER RECEPTACLE MOUNTED UNDER LH DOOR			N/C
134-001	ALUMINUM FLYWHEEL HOUSING			STD
155-075	mitsubishi 12V MOD 3.175-DP60 STARTER WITH INTEGRATED MAGNETIC SWITCH			STD
<b>Transmission</b>				
342-1NC	ALLISON 4700 RDS AUTOMATIC TRANSMISSION WITH PTO PROVISION	390	150	\$27,998.00
<b>Transmission Equipment</b>				
343-339	ALLISON VOCATIONAL PACKAGE 223 - AVAILABLE ON 3000/4000 PRODUCT FAMILIES WITH VOCATIONAL MODELS RDS, HS, MH AND TRV			N/C
84B-012	ALLISON VOCATIONAL RATING FOR ON/OFF HIGHWAY APPLICATIONS AVAILABLE WITH ALL PRODUCT FAMILIES			N/C
84C-039	PRIMARY MODE GEARS, LOWEST GEAR 1, START GEAR 2, HIGHEST GEAR 7, AVAILABLE FOR 4700/4800 PRODUCT FAMILIES ONLY			N/C
84D-039	SECONDARY MODE GEARS, LOWEST GEAR 1, START GEAR 2, HIGHEST GEAR 7, AVAILABLE FOR 4700 PRODUCT FAMILIES ONLY			N/C
84E-000	PRIMARY SHIFT SCHEDULE RECOMMENDED BY DTNA AND ALLISON, THIS DEFINED BY ENGINE AND VOCATIONAL USAGE			N/C
84F-000	SECONDARY SHIFT SCHEDULE RECOMMENDED BY DTNA AND ALLISON, THIS DEFINED BY ENGINE AND VOCATIONAL USAGE			N/C
84G-000	PRIMARY SHIFT SPEED RECOMMENDED BY DTNA AND ALLISON, THIS DEFINED BY ENGINE AND VOCATIONAL USAGE			N/C
84H-000	SECONDARY SHIFT SPEED RECOMMENDED BY DTNA AND ALLISON, THIS DEFINED BY ENGINE AND VOCATIONAL USAGE			N/C
84N-200	FUEL SENSE 2.0 DISABLED - PERFORMANCE - TABLE BASED			N/C
34C-001	ELECTRONIC TRANSMISSION CUSTOMER ACCESS CONNECTOR FIREWALL MOUNTED			N/C
* 362-158	CUSTOMER INSTALLED MUNCIE CS10 SERIES PTO			N/C

Prepared for:  
Judi Mendenhall  
METRO WASTE AUTHORITY  
12181 NE 12TH AVE  
MITCHELLVILLE, IA 50169  
Phone: 515.333.4430

Prepared by:  
Jordan Miller  
TRUCK CENTER COMPANIES  
3601 ADVENTURELAND DRIVE  
ALTOONA, IA 50009  
Phone: 515.650.7852

Data Code	Description	Weight Front	Weight Rear	Retail Price
363-001	PTO MOUNTING, LH SIDE OF MAIN TRANSMISSION			N/C
341-018	MAGNETIC PLUGS, ENGINE DRAIN, TRANSMISSION DRAIN, AXLE(S) FILL AND DRAIN			N/C
345-003	PUSH BUTTON ELECTRONIC SHIFT CONTROL, DASH MOUNTED			N/C
97G-004	TRANSMISSION PROGNOSTICS - ENABLED 2013			N/C
370-011	WATER TO OIL TRANSMISSION COOLER, FRAME MOUNTED	15		N/C
346-003	TRANSMISSION OIL CHECK AND FILL WITH ELECTRONIC OIL LEVEL CHECK			N/C
35T-001	SYNTHETIC TRANSMISSION FLUID (TES-295 COMPLIANT)			N/C

#### Front Axle and Equipment

400-1A6	DETROIT DA-F-12.0-3 12,000# FF1 71.5 KPI/3.74 DROP SINGLE FRONT AXLE			STD
402-075	BENDIX ADB22X AIR DISC FRONT BRAKES			\$959.00
403-043	2011/2013-FMVSS 121 RSD FRONT BRAKE LINING			STD
419-004	FRONT DISC BRAKE ROTORS			N/C
427-001	FRONT BRAKE DUST SHIELDS	5		\$354.00
409-006	FRONT OIL SEALS			STD
408-001	VENTED FRONT HUB CAPS WITH WINDOW, CENTER AND SIDE PLUGS - OIL			STD
416-022	STANDARD SPINDLE NUTS FOR ALL AXLES			STD
405-030	FRONT AIR DISC BRAKE INTERNAL ADJUSTERS			N/C
406-001	STANDARD KING PIN BUSHINGS			STD
536-050	TRW THP-60 POWER STEERING			STD
539-003	POWER STEERING PUMP			STD
534-015	2 QUART SEE THROUGH POWER STEERING RESERVOIR			STD
40T-002	CURRENT AVAILABLE SYNTHETIC 75W-90 FRONT AXLE LUBE			STD

#### Front Suspension

620-1F0	12,000# DUAL TAPERLEAF FRONT SUSPENSION			STD
619-005	MAINTENANCE FREE RUBBER BUSHINGS - FRONT SUSPENSION			STD
62G-998	NO FRONT SUSPENSION OPTIONS			STD
410-001	FRONT SHOCK ABSORBERS			STD

#### Rear Axle and Equipment

Prepared for:  
Judi Mendenhall  
METRO WASTE AUTHORITY  
12181 NE 12TH AVE  
MITCHELLVILLE, IA 50169  
Phone: 515.333.4430

Prepared by:  
Jordan Miller  
TRUCK CENTER COMPANIES  
3601 ADVENTURELAND DRIVE  
ALTOONA, IA 50009  
Phone: 515.650.7852

Data Code	Description	Weight Front	Weight Rear	Retail Price
420-1K3	MT-40-14X 40,000# R-SERIES TANDEM REAR AXLE		-40	\$280.00
421-411	4.11 REAR AXLE RATIO			N/C
424-003	IRON REAR AXLE CARRIER WITH OPTIONAL HEAVY DUTY AXLE HOUSING		30	\$101.00
386-075	MXL 18T MERITOR EXTENDED LUBE MAIN DRIVELINE WITH HALF ROUND YOKES	40	40	N/C
388-073	MXL 17T MERITOR EXTENDED LUBE INTERAXLE DRIVELINE WITH HALF ROUND YOKES			(\$8.00)
452-006	DRIVER CONTROLLED TRACTION DIFFERENTIAL - BOTH TANDEM REAR AXLES		30	\$1,317.00
878-022	(1) INTERAXLE LOCK VALVE, (1) DRIVER CONTROLLED DIFFERENTIAL LOCK FORWARD-REAR AXLE VALVE AND (1) REAR-REAR AXLE VALVE			\$43.00
87A-005	INDICATOR LIGHT FOR EACH INTERAXLE LOCKOUT SWITCH			STD
87B-008	INDICATOR LIGHT FOR EACH DRIVER CONTROLLED TRACTION DEVICE SWITCH			N/C
423-075	BENDIX ADB22X AIR DISC REAR BRAKES		-50	\$1,910.00
433-043	2011/2013-FMVSS 121 RSD REAR BRAKE LININGS			STD
434-003	STANDARD BRAKE CHAMBER LOCATION			N/C
451-005	REAR DISC BRAKE ROTORS			N/C
425-002	REAR BRAKE DUST SHIELDS		10	\$262.00
440-006	REAR OIL SEALS			STD
426-094	AIR DISC LONGSTROKE 2-DRIVE AXLES SPRING PARKING CHAMBERS		20	N/C
428-030	REAR AIR DISC BRAKE INTERNAL ADJUSTERS			N/C
41T-002	CURRENT AVAILABLE SYNTHETIC 75W-90 REAR AXLE LUBE			N/C

#### Rear Suspension

622-199	AIRLINER 46,000# REAR SUSPENSION	480	\$808.00
621-007	AIRLINER HIGH POSITION RIDE HEIGHT		STD
431-005	RESTRAINED AXLE SEATS IN AXLE CLAMP GROUP		N/C
624-016	51 INCH AXLE SPACING		STD
888-047	MANUAL DUMP VALVE FOR AIR SUSPENSION WITHOUT GAUGE		\$81.00
87D-006	INDICATOR LIGHT FOR EACH REAR SUSPENSION CONTROL SWITCH		N/C
910-001	SINGLE AIR REAR SUSPENSION LEVELING VALVE		STD

Prepared for:  
Judi Mendenhall  
METRO WASTE AUTHORITY  
12181 NE 12TH AVE  
MITCHELLVILLE, IA 50169  
Phone: 515.333.4430

Page 24 of 53  
Prepared by:  
Jordan Miller  
TRUCK CENTER COMPANIES  
3601 ADVENTURELAND DRIVE  
ALTOONA, IA 50009  
Phone: 515.650.7852

Data Code	Description	Weight Front	Weight Rear	Retail Price
623-002	TRANSVERSE CONTROL RODS			STD
439-005	REAR SHOCK ABSORBERS - TWO AXLES (TANDEM) (AIR RIDE SUSPENSION)			STD
<b>Brake System</b>				
490-101	WABCO 4S/4M ABS WITH TRACTION CONTROL, WIH ATC OFF-ROAD SWITCH			STD
871-001	REINFORCED NYLON, FABRIC BRAID AND WIRE BRAID CHASSIS AIR LINES			STD
904-001	FIBER BRAID PARKING BRAKE HOSE			STD
412-001	STANDARD BRAKE SYSTEM VALVES			STD
413-002	STD U.S. FRONT BRAKE VALVE			STD
432-003	RELAY VALVE WITH 5-8 PSI CRACK PRESSURE, NO REAR PROPORTIONING VALVE			STD
480-086	BW AD-9SI BRAKE LINE AIR DRYER WITH HEATER			\$2.00
483-003	BENDIX OIL COALESCING FILTER FOR AIR DRYER			\$20.00
460-007	ALUMINUM AIR BRAKE RESERVOIRS	-15	-15	\$198.00
477-006	BW DV-2 AUTO DRAIN VALVE WITHOUT HEATER ON ALL TANK(S)			\$119.00
<b>Trailer Connections</b>				
481-074	15 FOOT COILED TRAILER AIR HOSE WITH 48 INCH TRACTOR, 12 INCH TRAILER LEADS	2		\$96.00
476-008	40 INCH HOSETENNA MOUNTED ON A FRAME (TOWER) BRACKET	10	5	\$196.00
484-006	COMBINATION DUMMY GLAD HANDS AND LIGHT PLUG HOLDER			STD
296-011	PRIMARY RECEPTACLE CENTER PIN WIRED CONSTANT HOT			\$1.00
297-063	SAE J560 7-WAY PRIMARY TRAILER CABLE RECEPTACLE MOUNTED AFT OF BACK OF CAB ON HOSETENNA			N/C
335-001	CHASSIS POWER DISTRIBUTION MODULE (CPDM)			\$367.00
331-001	SUPPLEMENTAL J560 7-WAY RECEPTACLE LOCATED WITH PRIMARY RECEPTACLE			\$97.00
30K-014	2-WAY HEAVY DUTY 90 AMP RECEPTACLE WIRED HOT, MOUNTED LH ON BACK OF CAB			\$214.00
310-049	15 FOOT PHILLIPS LECTRACOIL DETACHABLE COILED ELECTRICAL CABLE WITH J560 CONNECTOR AND METAL HOUSING ENDS	2		\$59.00
<b>Wheelbase &amp; Frame</b>				
545-515	5150MM (203 INCH) WHEELBASE			N/C



Prepared for:  
 Judi Mendenhall  
 METRO WASTE AUTHORITY  
 12181 NE 12TH AVE  
 MITCHELLVILLE, IA 50169  
 Phone: 515.333.4430

Prepared by:  
 Jordan Miller  
 TRUCK CENTER COMPANIES  
 3601 ADVENTURELAND DRIVE  
 ALTOONA, IA 50009  
 Phone: 515.650.7852

Data Code	Description	Weight Front	Weight Rear	Retail Price
546-100	11/32X3-1/2X10-3/16 INCH STEEL FRAME (8.73MMX258.8MM/0.344X10.19 INCH) 120KSI	180	-100	\$133.00
552-012	1450MM (57 INCH) REAR FRAME OVERHANG			STD
55W-005	FRAME OVERHANG RANGE: 51 INCH TO 60 INCH			N/C
AC8-99D	CALC'D BACK OF CAB TO REAR SUSP C/L (CA) : 126.38 in			
AE8-99D	CALCULATED EFFECTIVE BACK OF CAB TO REAR SUSPENSION C/L (CA) : 114.38 in			
AE4-99D	CALC'D FRAME LENGTH - OVERALL : 289.96			
FSS-0LH	CALCULATED FRAME SPACE LH SIDE : 5.58 in			N/C
FSS-0RH	CALCULATED FRAME SPACE RH SIDE : 165.55 in			N/C
AM6-99D	CALC'D SPACE AVAILABLE FOR DECKPLATE : 86.6 in			
553-002	FLANGED TAPERED END OF FRAME			STD
559-001	STANDARD WEIGHT ENGINE CROSSMEMBER			STD
562-001	STANDARD MIDSHIP #1 CROSSMEMBER(S)			STD
572-020	INVERTED U TRACTOR CROSSMEMBER		10	\$126.00
565-002	HEAVY DUTY SUSPENSION CROSSMEMBER			N/C
568-001	STANDARD WEIGHT REAR SUSPENSION CROSSMEMBER			STD
<b>Chassis Equipment</b>				
674-001	LH BACK OF CAB ACCESS			STD
592-058	49 INCH (1225MM) DECK PLATE FLUSH MOUNTED BETWEEN RAILS	5	5	\$167.00
556-033	12 INCH PLAIN ALUMINUM BUMPER	-60		\$36.00
557-003	CENTER STEP CUTOUT IN BUMPER			STD
558-070	REMOVABLE FRONT TOW/RECOVERY DEVICE, STORED ON CHASSIS FRAME	15		\$67.00
574-003	SINGLE LICENSE PLATE BRACKET BELOW BUMPER			STD
585-005	BETTS B-84 PAINTED COILED SPRING HEAVY DUTY MUDFLAP BRACKETS		10	\$17.00
590-001	BLACK MUDFLAPS			STD
586-031	FRONT CAB MOUNTED MUDFLAPS AND HOOD MOUNTED SPLASH SHIELDS			STD
551-003	HUCK-SPIN ROUND COLLAR CHASSIS FASTENERS EXCLUDING FIFTH WHEEL			N/C
583-056	STAINLESS STEEL QUARTER FENDERS WITH LOGO		40	\$255.00

#### Fifth Wheel



Prepared for:  
Judi Mendenhall  
METRO WASTE AUTHORITY  
12181 NE 12TH AVE  
MITCHELLVILLE, IA 50169  
Phone: 515.333.4430

Page 26 of 53  
Prepared by:  
Jordan Miller  
TRUCK CENTER COMPANIES  
3601 ADVENTURELAND DRIVE  
ALTOONA, IA 50009  
Phone: 515.650.7852

	Data Code	Description	Weight Front	Weight Rear	Retail Price
*	578-1A3	HOLLAND FW33 SERIES LO-LUBE FLAT PLATE STATIONARY FIFTH WHEEL			\$131.00
*	577-457	FIFTH WHEEL 457MM (18.0 INCHES) AHEAD OF SUSPENSION CENTERLINE			N/C
	580-001	ADDITIONAL FIFTH WHEEL DRILLINGS AT 2, 4 AND 6 INCHES FORE AND AFT OF BOLT DOWN POSITION			\$63.00
*	582-071	203MM (8.00 INCH) FIFTH WHEEL HEIGHT			N/C
*	570-004	PLATE MOUNT - FIFTH WHEEL MOUNTING			N/C
*	579-005	LH FIFTH WHEEL RELEASE			N/C
<b>Fuel Tanks</b>					
	204-154	80 GALLON/302 LITER ALUMINUM FUEL TANK - LH			STD
	218-006	25 INCH DIAMETER FUEL TANK(S)			STD
	215-005	PLAIN ALUMINUM/PAINTED STEEL FUEL/HYDRAULIC TANK(S) WITH PAINTED BANDS			STD
	212-008	FUEL TANK(S) AFT			STD
	664-001	PLAIN STEP FINISH			STD
	205-001	FUEL TANK CAP(S)			STD
	122-1K5	DAVCO 487 FUEL/WATER SEPARATOR WITH ESOC AND 12 VOLT AND 120 VOLT PREHEATER	15		\$809.00
	216-020	EQUIFLO INBOARD FUEL SYSTEM			STD
	202-016	HIGH TEMPERATURE REINFORCED NYLON FUEL LINE			STD
	221-001	FUEL COOLER	10		\$164.00
<b>Tires</b>					
*	093-2FU	BRIDGESTONE M853 11R22.5 16 PLY RADIAL FRONT TIRES	6		\$102.00
	094-2D6	BRIDGESTONE M770 11R22.5 14 PLY RADIAL REAR TIRES		136	(\$320.00)
<b>Hubs</b>					
	418-058	CONMET PRESET PLUS PREMIUM ALUMINUM FRONT HUBS			(\$34.00)
	450-058	CONMET PRESET PLUS PREMIUM ALUMINUM REAR HUBS			\$12.00
<b>Wheels</b>					
	502-693	ALCOA LVL ONE 88267X 22.5X8.25 10-HUB PILOT 5.80 INSET ALUMINUM DISC FRONT WHEELS	-50		\$322.00
	505-693	ALCOA LVL ONE 88267X 22.5X8.25 10-HUB PILOT ALUMINUM DISC REAR WHEELS		-200	\$1,288.00

Prepared for:  
Judi Mendenhall  
METRO WASTE AUTHORITY  
12181 NE 12TH AVE  
MITCHELLVILLE, IA 50169  
Phone: 515.333.4430

Prepared by:  
Jordan Miller  
TRUCK CENTER COMPANIES  
3601 ADVENTURELAND DRIVE  
ALTOONA, IA 50009  
Phone: 515.650.7852

Data Code	Description	Weight Front	Weight Rear	Retail Price
<b>Cab Exterior</b>				
829-057	122 INCH BBC ALUMINUM CONVENTIONAL CAB			STD
653-004	RH CAB DOOR(S) WITH 70 DEGREE DOOR STOP			STD
651-004	LH CAB DOOR(S) WITH 70 DEGREE DOOR STOP			STD
784-032	AIRSHIELD ROOF FAIRING - FACTORY PAINTED AND INSTALLED	100	25	\$1,535.00
650-051	SEVERE DUTY VOCATIONAL AIR CAB MOUNTS			\$106.00
648-002	NONREMOVABLE BUGSCREEN MOUNTED BEHIND GRILLE			STD
667-001	FRONT FENDERS			STD
678-047	LH EXTERIOR AND RH EXHAUST MOUNTED GRAB HANDLES WITH SINGLE RUBBER INSERTS AND LH AND RH INTERIOR GRAB HANDLES			\$121.00
645-003	BRIGHT FINISH BEZEL WITH STYLIZED TILT HANDLE			STD
646-006	STAINLESS STEEL GRILLE			STD
65X-004	BLACK HOOD MOUNTED AIR INTAKE GRILLE			STD
644-068	FIBERGLASS HOOD WITH REINFORCED FENDERS			STD
652-025	122SD NAMEPLATE			STD
690-010	ENGINE COMPARTMENT PREMIUM NOISE ABATEMENT AND INSULATION			STD
727-1AH	SINGLE 14 INCH ROUND POLISHED AIR HORN ROOF MOUNTED			STD
726-001	SINGLE ELECTRIC HORN			STD
728-001	SINGLE HORN SHIELD			STD
657-001	DOOR LOCKS AND IGNITION SWITCH KEYED THE SAME			STD
575-001	REAR LICENSE PLATE MOUNT END OF FRAME			STD
312-050	HALOGEN COMPOSITE HEADLAMPS			STD
302-054	FREIGHTLINER LED MARKER LIGHTS INTEGRAL WITH EXTERIOR SUN VISOR			(\$58.00)
311-001	DAYTIME RUNNING LIGHTS			STD
294-050	FREIGHTLINER FLANGE MOUNTED LED STOP/TAIL/TURN/BACKUP LIGHTS BY TRUCK- LITE		5	\$64.00
300-015	STANDARD FRONT TURN SIGNAL LAMPS			STD
318-004	(2) FLUSH UTILITY LIGHTS MOUNTED BACK OF CAB/SLEEPER	6		\$74.00
744-1CA	DUAL BRIGHT FINISH HEATED AERODYNAMIC MIRRORS WITH INTEGRAL CONVEX AND DUAL AXIS LH AND RH REMOTE	20		\$110.00

Prepared for:  
 Judi Mendenhall  
 METRO WASTE AUTHORITY  
 12181 NE 12TH AVE  
 MITCHELLVILLE, IA 50169  
 Phone: 515.333.4430

Page 28 of 53  
 Prepared by:  
 Jordan Miller  
 TRUCK CENTER COMPANIES  
 3601 ADVENTURELAND DRIVE  
 ALTOONA, IA 50009  
 Phone: 515.650.7852

Data Code	Description	Weight Front	Weight Rear	Retail Price
797-001	DOOR MOUNTED MIRRORS			STD
796-001	102 INCH EQUIPMENT WIDTH			STD
743-209	LH AND RH CONVEX MIRRORS INTEGRAL WITH PRIMARY MIRRORS			(\$22.00)
74A-001	RH DOWN VIEW MIRROR			STD
729-001	STANDARD SIDE/REAR REFLECTORS			STD
73A-002	REAR REFLECTIVE DEVICE			STD
677-053	RH AFTERTREATMENT SYSTEM CAB ACCESS WITH PLAIN SHIELDING			STD
764-001	FIBERGLASS EXTERIOR SUN VISOR	12		\$342.00
768-032	20X36 INCH TINTED REAR WINDOW			STD
661-006	TINTED DOOR GLASS			STD
654-011	RH AND LH ELECTRIC POWERED WINDOWS			STD
663-014	2-PIECE BONDED SOLAR GREEN GLASS WINDSHIELD			STD
659-007	8 LITER (2 GAL) WINDSHIELD WASHER RESERVOIR, CAB MOUNTED, WITHOUT FLUID LEVEL INDICATOR			STD
<b>Cab Interior</b>				
707-1BT	OPAL GRAY CHAPARRAL VINYL INTERIOR			STD
70K-001	CLASSIC SLATE GRAY HARD TRIM			STD
706-047	LH DOOR TRIM WITH ADDITIONAL ARCTIC SEAL PACKAGE			STD
708-047	RH DOOR TRIM WITH ADDITIONAL ARCTIC SEAL PACKAGE			STD
772-022	CAB BLACK FLOOR MATS WITH PREMIUM NOISE ABATEMENT AND INSULATION			STD
691-006	FORWARD ROOF MOUNTED CONSOLE WITH DOORS RH AND LH			STD
693-025	LH AND RH DOOR MAP POCKETS			STD
741-019	COAT HOOK(S) IN CAB			STD
738-001	DIGITAL FLUSH MOUNTED ALARM CLOCK IN DASH			\$60.00
742-030	(3) CUP HOLDERS, LH, CENTER AND RH DASH			STD
680-024	AGATE/SLATE GRAY WING DASH			STD
700-014	HEATER, DEFROSTER AND AIR CONDITIONER WITH CONSTANT OUTLET TEMPERATURE CONTROL			STD
701-002	HVAC DUCTING WITH MAIN FRESH AIR FILTER			STD
703-005	MAIN HVAC CONTROLS WITH RECIRCULATION SWITCH			STD
170-015	STANDARD HEATER PLUMBING			STD

Prepared for:  
 Judi Mendenhall  
 METRO WASTE AUTHORITY  
 12181 NE 12TH AVE  
 MITCHELLVILLE, IA 50169  
 Phone: 515.333.4430

Prepared by:  
 Jordan Miller  
 TRUCK CENTER COMPANIES  
 3601 ADVENTURELAND DRIVE  
 ALTOONA, IA 50009  
 Phone: 515.650.7852

Data Code	Description	Weight Front	Weight Rear	Retail Price
130-041	VALEO HEAVY DUTY A/C REFRIGERANT COMPRESSOR			STD
698-001	RADIATOR MOUNTED AIR CONDITIONER CONDENSER			STD
702-002	BINARY CONTROL, R-134A			STD
739-023	CAB PREMIUM NOISE ABATEMENT AND INSULATION			STD
285-003	CIRCUIT FUSES			STD
280-007	12V NEGATIVE GROUND ELECTRICAL SYSTEM			STD
324-1A4	DOOR ACTIVATED DOME/RED MAP LIGHTS LH AND RH OVERHEAD, COURTESY LIGHTS IN EACH DOOR, UPPER REAR DOME LIGHT AND FOOT WELL LIGHTS LH AND RH WITH DASH SWITCHES			STD
655-001	CAB DOOR LATCHES WITH MANUAL DOOR LOCKS			STD
284-092	(3) 12 VOLT POWER RECEPTACLES MOUNTED IN DASH			STD
756-1D9	PREMIUM HIGH BACK AIR SUSPENSION DRIVER SEAT WITH 3 CHAMBER AIR LUMBAR, INTEGRATED CUSHION EXTENSION, FORWARD AND REAR CUSHION TILT, ADJUSTABLE SHOCK ABSORBER	40		\$197.00
760-1DC	BASIC HIGH BACK NON SUSPENSION PASSENGER SEAT			STD
759-009	INBOARD DRIVER SEAT ARMREST, NO PASSENGER SEAT ARMREST	2		\$33.00
758-120	LAREDO LEATHER DRIVER SEAT COVER			\$29.00
761-120	LAREDO LEATHER PASSENGER SEAT COVER			\$27.00
763-011	3 POINT ADJUSTABLE D-RING RETRACTOR DRIVER AND PASSENGER SEAT BELTS			STD
532-002	ADJUSTABLE TILT AND TELESCOPING STEERING COLUMN			STD
540-015	4-SPOKE 18 INCH (450MM) STEERING WHEEL			STD
765-002	DRIVER AND PASSENGER INTERIOR SUN VISORS			STD
<b>Instruments &amp; Controls</b>				
870-001	BLACK GAUGE BEZELS			STD
732-046	BANDON DRIFTWOOD DRIVER INSTRUMENT PANEL			STD
734-046	BANDON DRIFTWOOD CENTER INSTRUMENT PANEL			STD
486-001	LOW AIR PRESSURE INDICATOR LIGHT AND AUDIBLE ALARM			STD

Prepared for:  
 Judi Mendenhall  
 METRO WASTE AUTHORITY  
 12181 NE 12TH AVE  
 MITCHELLVILLE, IA 50169  
 Phone: 515.333.4430

Prepared by:  
 Jordan Miller  
 TRUCK CENTER COMPANIES  
 3601 ADVENTURELAND DRIVE  
 ALTOONA, IA 50009  
 Phone: 515.650.7852

Data Code	Description	Weight Front	Weight Rear	Retail Price
840-002	2 INCH PRIMARY AND SECONDARY AIR PRESSURE GAUGES			STD
198-025	INTAKE MOUNTED AIR RESTRICTION INDICATOR WITHOUT GRADUATIONS			STD
721-001	97 DB BACKUP ALARM		3	\$56.00
149-017	ELECTRONIC CRUISE CONTROL WITH SWITCHES ON AUXILIARY GAUGE PANEL (B DASH PANEL)			STD
156-007	KEY OPERATED IGNITION SWITCH AND INTEGRAL START POSITION; 4 POSITION OFF/RUN/START/ACCESSORY			STD
811-040	ICU4ME DRIVER MESSAGE CENTER WITH GRAPHICAL DISPLAY, WHITE FACE GAUGES, DIAGNOSTICS AND DATA LINKED			STD
160-038	HEAVY DUTY ONBOARD DIAGNOSTICS INTERFACE CONNECTOR LOCATED BELOW LH DASH			STD
844-001	2 INCH ELECTRIC FUEL GAUGE			STD
845-011	FUEL FILTER RESTRICTION INDICATOR			STD
148-085	EMISSIONS LIMITED IDLE ADJUST			STD
856-001	ELECTRICAL ENGINE COOLANT TEMPERATURE GAUGE			STD
864-001	2 INCH TRANSMISSION OIL TEMPERATURE GAUGE			N/C
867-004	ELECTRONIC OUTSIDE TEMPERATURE SENSOR DISPLAY IN DRIVER MESSAGE CENTER			STD
830-017	ENGINE AND TRIP HOUR METERS INTEGRAL WITHIN DRIVER DISPLAY			STD
49B-004	ELECTRONIC STABILITY CONTROL			STD
852-002	ELECTRIC ENGINE OIL PRESSURE GAUGE			STD
679-001	OVERHEAD INSTRUMENT PANEL			STD
746-114	AM/FM/WB WORLD TUNER RADIO WITH AUXILIARY INPUT, J1939	10		\$290.00
747-001	DASH MOUNTED RADIO			N/C
750-002	(2) RADIO SPEAKERS IN CAB			N/C
753-004	30 INCH DUAL POST SIDE MOUNT AM/FM ANTENNA MOUNTED ON LH SIDE			\$59.00
748-006	POWER AND GROUND WIRING PROVISION OVERHEAD			STD
749-014	ROOF/OVERHEAD CONSOLE AND TOP OF DASH WITH PLATE AND STRAPS PROVISIONS FOR CB RADIO	2		\$60.00
752-066	CB ANTENNA BRACKET AND LEAD RH MIRROR MOUNTED			N/C

**Prepared for:**  
Judi Menderhall  
METRO WASTE AUTHORITY  
12181 NE 12TH AVE  
MITCHELLVILLE, IA 50169  
Phone: 515.333.4430

**Prepared by:**  
Jordan Miller  
TRUCK CENTER COMPANIES  
3601 ADVENTURELAND DRIVE  
ALTOONA, IA 50009  
Phone: 515.650.7852

Data Code	Description	Weight Front	Weight Rear	Retail Price
810-027	ELECTRONIC MPH SPEEDOMETER WITH SECONDARY KPH SCALE, WITHOUT ODOMETER			STD
817-001	STANDARD VEHICLE SPEED SENSOR			STD
812-001	ELECTRONIC 3000 RPM TACHOMETER			STD
813-1B4	VT-HU CONNECTIVITY PLATFORM HARDWARE			STD
8D1-002	2 YEARS DETROIT CONNECT BASE PACKAGE (VIRTUAL TECHNICIAN, DETROIT CONNECT PORTAL ACCESS)FOR VT-HU CONNECTIVITY PLATFORM			STD
162-002	IGNITION SWITCH CONTROLLED ENGINE STOP			STD
329-012	FOUR ON/OFF ROCKER SWITCHES IN THE DASH WITH INDICATOR LIGHTS AND WIRE ROUTED TO CHASSIS AT BACK OF CAB, LABEL OPT			\$131.00
482-001	BW TRACTOR PROTECTION VALVE			STD
883-001	TRAILER HAND CONTROL BRAKE VALVE			STD
836-015	DIGITAL VOLTAGE DISPLAY INTEGRAL WITH DRIVER DISPLAY			STD
660-008	SINGLE ELECTRIC WINDSHIELD WIPER MOTOR WITH DELAY			STD
304-003	MARKER LIGHT/HEADLIGHT SWITCH WITH SEPARATE INTERRUPTER FOR CLEARANCE LIGHTS			STD
882-004	TWO VALVE PARKING BRAKE SYSTEM WITH WARNING INDICATOR			STD
299-005	GROTE TURN SIGNAL SWITCH WITH DIMMER			STD
298-045	12 BULB 25 AMP HEAVY DUTY ELECTRONIC FLASHER			STD
<b>Design</b>				
065-000	PAINT: ONE SOLID COLOR			\$1,043.00
<b>Color</b>				
980-1NB	CAB COLOR A: L5205EY SAND MET ELITE EY			N/C
986-020	BLACK, HIGH SOLIDS POLYURETHANE CHASSIS PAINT			STD
976-995	SUNVISOR PAINTED SAME AS CAB COLOR A			N/C
<b>Certification / Compliance</b>				
996-001	U.S. FMVSS CERTIFICATION, EXCEPT SALES CABS AND GLIDER KITS			STD
<b>Secondary Factory Options</b>				
998-001	CORPORATE PDI CENTER IN-SERVICE ONLY			N/C
<b>Raw Performance Data</b>				

Prepared for:  
 Judi Mendenhall  
 METRO WASTE AUTHORITY  
 12181 NE 12TH AVE  
 MITCHELLVILLE, IA 50169  
 Phone: 515.333.4430

Page 32 of 53  
 Prepared by:  
 Jordan Miller  
 TRUCK CENTER COMPANIES  
 3601 ADVENTURELAND DRIVE  
 ALTOONA, IA 50009  
 Phone: 515.650.7852

Data Code	Description	Weight Front	Weight Rear	Retail Price
AE8-99D	CALCULATED EFFECTIVE BACK OF CAB TO REAR SUSPENSION C/L (CA) : 114.38 in			
AM6-99D	CALC'D SPACE AVAILABLE FOR DECKPLATE : 86.6 in			

#### Sales Programs

NO SALES PROGRAMS HAVE BEEN SELECTED

#### TOTAL VEHICLE SUMMARY

#### Adjusted List Price

Adjusted List Price \*\* \$214,995.00

#### Weight Summary

	Weight Front	Weight Rear	Total Weight
Factory Weight <sup>†</sup>	9785 lbs	7295 lbs	17080 lbs
Dealer Installed Options	0 lbs	0 lbs	0 lbs
Total Weight <sup>†</sup>	9785 lbs	7295 lbs	17080 lbs

#### ITEMS NOT INCLUDED IN ADJUSTED LIST PRICE

#### Other Factory Charges

RD1-002	2 YEARS DETROIT CONNECT BASE PACKAGE (VIRTUAL TECHNICIAN, DETROIT CONNECT PORTAL ACCESS)FOR VT-HU CONNECTIVITY PLATFORM	N/C
P73-2FT	STANDARD DESTINATION CHARGE	\$2,200.00

#### Extended Warranty

WAI-983	EW4: DD13 VOC \$0 DED 7 YEARS/400,000 MILES/644,000 KM FEX APPLIES	\$6,455.00
---------	---	------------





**Prepared for:**  
 Judi Mendenhall  
 METRO WASTE AUTHORITY  
 12181 NE 12TH AVE  
 MITCHELLVILLE, IA 50169  
 Phone: 515.333.4430

**Prepared by:**  
 Jordan Miller  
 TRUCK CENTER COMPANIES  
 3601 ADVENTURELAND DRIVE  
 ALTOONA, IA 50009  
 Phone: 515.650.7852

WBB-414	TC4: HD MODERATE 7 YEARS/400,000 MILES / 644,000 KM EXTENDED TRUCK COVERAGE. FEX APPLIES	\$8,450.00
WAK-221	ALLISON 4700 RDS TRANSMISSION FOR UTILITY EXTENDED WARRANTY, 5 YEARS/UNLIMITED MILEAGE FEX	\$1,706.00
WAG-032	TOWING: CQ 7 YEARS/UNLIMITED MILES/KM EXTENDED TOWING COVERAGE \$550 CAP FEX APPLIES	\$1,100.00

Currency Exchange Rate	1.0000
Total Extended Warranty (Local Currency)	\$17,711.00

### Dealer Installed Options

		Weight Front	Weight Rear	Price
001	ELECTRONIC ENGINEERING CO	0	0	\$1,542.00
002	HTE QUOTE 22989	0	0	\$9,445.00
Total Dealer Installed Options		0 lbs	0 lbs	\$10,987.00

(+) Weights shown are estimates only.

If weight is critical, contact Customer Application Engineering.

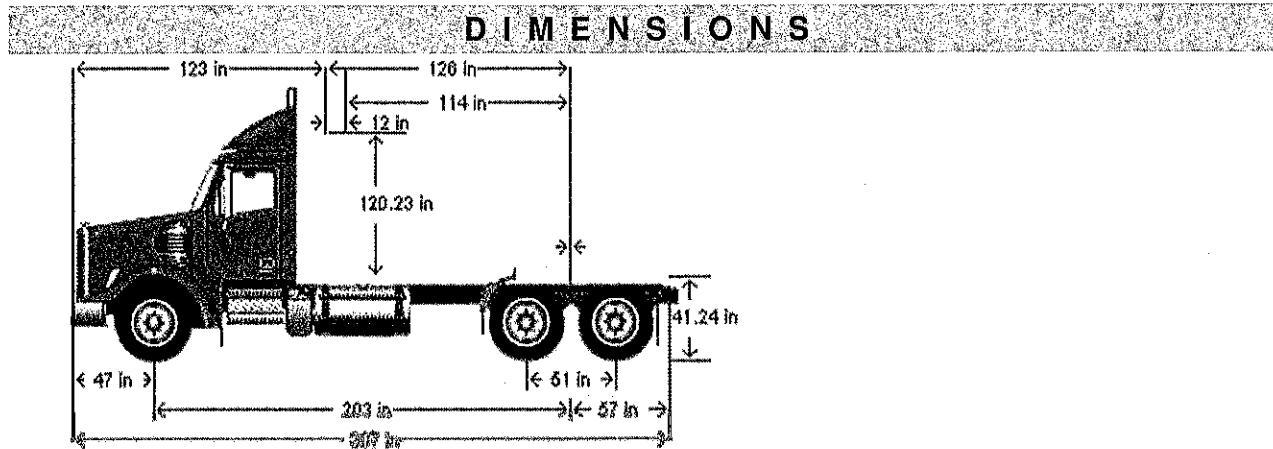
(\*\*) Prices shown do not include taxes, fees, etc... "Net Equipment Selling Price" is located on the Quotation Details Proposal Report.

(\*\*\*) All cost increases for major components (Engines, Transmissions, Axles, Front and Rear Tires) and government mandated requirements, tariffs, and raw material surcharges will be passed through and added to factory invoices.



Prepared for:  
Judi Mendenhall  
METRO WASTE AUTHORITY  
12181 NE 12TH AVE  
MITCHELLVILLE, IA 50169  
Phone: 515.333.4430

Page 34 of 53  
Prepared by:  
Jordan Miller  
TRUCK CENTER COMPANIES  
3601 ADVENTURELAND DRIVE  
ALTOONA, IA 50009  
Phone: 515.650.7852



#### VEHICLE SPECIFICATIONS SUMMARY - DIMENSIONS

Model .....	122SBA
Wheelbase (545) .....	5150MM (203 INCH) WHEELBASE
Rear Frame Overhang (552) .....	1450MM (57 INCH) REAR FRAME OVERHANG
Fifth Wheel (578) .....	CUSTOM FIFTH WHEEL
Mounting Location (577) .....	FIFTH WHEEL 457MM (18.0 INCHES) AHEAD OF SUSPENSION CENTERLINE
Maximum Forward Position (in) .....	18
Maximum Rearward Position (in) .....	10016
Amount of Slide Travel (in) .....	N/A
Slide Increment (in) .....	N/A
Desired Slide Position (in) .....	0.0
Cab Size (829) .....	122 INCH BBC ALUMINUM CONVENTIONAL CAB
Sleeper (682) .....	NO SLEEPER BOX/SLEEPER CAB
Exhaust System (016) .....	RH OUTBOARD UNDER STEP MOUNTED HORIZONTAL AFTERTREATMENT SYSTEM ASSEMBLY WITH RH B-PILLAR MOUNTED VERTICAL TAILPIPE

#### TABLE SUMMARY - DIMENSIONS

Prepared for:  
 Judi Mendenhall  
 METRO WASTE AUTHORITY  
 12181 NE 12TH AVE  
 MITCHELLVILLE, IA 50169  
 Phone: 515.333.4430

Prepared by:  
 Jordan Miller  
 TRUCK CENTER COMPANIES  
 3601 ADVENTURELAND DRIVE  
 ALTOONA, IA 50009  
 Phone: 515.650.7852

Dimensions	Inches
Bumper to Back of Cab (BBC)	123.4
Bumper to Centerline of Front Axle (BA)	47.0
Back of Cab to Centerline of Rear Axle(s) (CA)	126.4
Effective Back of Cab to Centerline of Rear Axle(s) (Effective CA)	114.4
Back of Cab Protrusions (Exhaust/Intake) (CP)	0.0
Back of Cab Protrusions (Side Extenders/Trim Tab) (CP)	0.0
Back of Cab Protrusions (CNG Tank)	0.0
Back of Cab Clearance (CL)	12.0
Back of Cab to End of Frame	183.5
Cab Height (CH)	120.2
Fifth Wheel to Centerline of Rear Axle(s) (FW)	0.0
Wheelbase (WB)	202.8
Frame Overhang (OH)	57.1
Overall Length (OAL)	306.9
Rear Axle Spacing	51.0
Unladen Frame Height at Centerline of Rear Axle	41.2

Performance calculations are estimates only. If performance calculations are critical, please contact Customer Application Engineering.

**Metro Waste Authority Board**  
**Monthly Board Meeting**  
**October 21, 2020**  
**CONSENT AGENDA ITEM 8**

---

**ITEM:**

Approval to Purchase Three Transfer Trailers at Metro Transfer Stations.

**SUMMARY:**

A request for proposal for three transfer trailers was released in September of 2020. A total of two (2) responses were received. The proposals were evaluated by Metro Waste Authority (MWA) staff.

**DISCUSSION POINTS:**

The following vendors submitted bids:

<b>Name:</b>	<b>Manufacturer:</b>	<b>Price (ea.):</b>	<b>Total:</b>
Mac Trailers	Mac	\$98,793.00	\$296,379
Ken's Truck Repair	Titan	\$105,659	\$316,977

Both bids were under budget.

Staff used a scoring system that included the following criteria:

- Conformity to Bid Specifications
- Machine Job Performance
- Warranty Provided
- Bid Price
- Parts and Service Provided
- Previous Experience with Bidder
- Machine Delivery

Although it was not the lowest bid, Ken's Truck Repair (Titan) received the highest score.

**STAFF RECOMMENDATION:**

Staff recommends Ken's Truck Repair (Titan) to be awarded the contract for the three transfer trailers.

**HISTORY/PROJECT ANALYSIS:**

Internal mechanics and drivers assisted in the creation of a process that captured the equipment needs and requirements, which resulted with review of the two bids received. Though Mac Trailers provided the lowest bid, staff recommends the Titan trailers due to a challenging past experience with Mac. The Macs have not proven as durable in MWA's operation, with stress fractures and weak top rails identified as common, ongoing issues.

**BUDGET REQUIREMENTS:**

The proposed pricing of \$105,659 per trailer is under the budgeted amount of \$114,000.

Total price for all three trailers is \$316,997.

**ATTACHMENTS:**

Attachment A -Bid evaluation

Attachment B – Ken’s Truck Repair (Titan) quote

**CONTACT:**

Judi Mendenhall, director of recycling and diversion, 515.333.4430

**Attachment A**  
**Bid Evaluation**

	Conformity To Bid Specifications	Machine Job Performance	Warranty Provided	Lowest Bid Price	Parts & Service Provided	Previous Experience with Bidder	Machine Delivery	TOTAL	AVERAGE
Maximum Points	60	60	10	30	10	10	40	220	
Mac Trailers									
AC	55	40	9	30	9	9	35	187	<b>189</b>
JL	55	40	10	30	10	5	40	190	
JM	55	50	10	30	5	5	35	190	
Ken's Truck Repair (Titan)									
AC	55	50	9	28	8	9	35	194	<b>198</b>
JL	55	55	10	25	10	10	40	205	
JM	55	55	10	25	8	8	35	196	

ATTACHMENT  
BWebsite [WWW.KENSTRUCKREPAIR.com](http://WWW.KENSTRUCKREPAIR.com)Email [Sales@KENSTRUCKREPAIR.com](mailto:Sales@KENSTRUCKREPAIR.com)**Truck Repair, Inc.**

Office 815•697•2361

Fax 815•697•2522

**Interstate-57 Exit 302 ◀ 400 North Oak - P.O. Box 37 ▶ Chebanse, Illinois 60922**

September 25, 2020

Metro Waste Authority  
12181 N.E. 12<sup>th</sup> Avenue  
Mitchellville, Iowa 50169Phone: 515-333-4445  
Email: [jme@mwatoday.com](mailto:jme@mwatoday.com)**Quote Specifications for:  
2021 Titan 50' 3 Axle Thinwall Walking Floor Trailer**

Base Model	50-3-TW-WF
Style	Wedge
Wall Configuration	
Front	To suit garbage application
Sides	To suit garbage application
Rear Door	Side swing w/upper half steel mesh w/holes no larger than 2" Lights in Door - Manual Release – See Note #5
Overall Length	50 ft
Overall Width	102" Nominal
Overall Height	13' Front to Rear – Allows for 4" tarp installation
King Pin Location	36" WELD IN
Upper Coupler	3/8" THK Steel– Set @ 48"
Number of Axles	
<b>PRIMARY</b>	Two (2)
Axles	Intraax – Straight Spindle
Axle Track	77"
Suspension	Intraax AAT 30K
Location of Spreads	30" From Rear
Hub / Drum Assembly	Cast Disc Brake (Bendix)
Disc Wheel Size	8.25 x 22.5
Rims	Alum-LVL Inner/Outer
Tires	Brand Continental (comparable to Firestone)
Size	11R22.5
Tread	HSC1
Ply	16
Quantity	8
<b>LIFT</b>	One (1)
Axles	5" round - .5 wall-straight spindle
Axle Track	77"
Suspension	Hendrickson HLN 13,200 lbs
Location of Spreads	50" ahead of front primary axle
Hub / Drum Assembly	10 Stud, Hub Pilot / Cast Drum
Disc Wheel Size	8.25 x 22.5
Rims	Alum-LVL
Tires	Brand Continental (comparable to Firestone)



	Size	11R22.5 (Higher Rating than Requested Size)
	Tread	HSC1
	Ply	16
	Quantity	2
Axle Layout		FRONT-Lift-50-Primary-50-Primary-30-REAR
Oil Seals		To Suit Disc Brakes
Lubricants		Synthetic Oil
Brakes	ABS	2S1M Meritor Wabco
	Slack Adj.	Bendix Disc Brakes
	Cam Enclos	None – c/w Dust Shields
Lift Kits		Integrated in suspension
Lift Controls		Power up
Frame Width		48"
Rear Bumper		Aluminum, Offset, Push w/Underride
	Option #1	Tow Shackles
	Option #2	Steel Vertical Blocks Bolted to Bumper
Tire Carrier		None
Landing Gear		Holland Mark 5 – Skid Foot
Top Rail		Titan Tapered V1
Top Cross Tube		Qty 1 – Spring Steel (two-piece style) (240" from kingpin)
Floor Crossmembers		12" Centers
Floor Kit		Running Floor II - 3" dia. cylinders
<u>Slat Model &amp; Width</u>		2301 (1841) CWS 3 1/2" – T-blocks Rear
Slat Wear Strips		Titan installed 24" wear strips rear, 3/8" square bar between ridges flush with top of slat
Continuous Bearing		Continuous splash/hold down bearings
Side Wall Wear Plates		Boomerang Wear Plates
Front Access Door		None
Tarp Style		Customer to Supply & Install Tarp System
Tarp Header		Flat – Front & Rear
Tarp Basket		None
Tarp Hooks		None
Axle Fender		None
Hyd Fitting	Pressure	1 1/4" Wing – Male – See Note #1 – Please Confirm Fitting Part #
	Return	1 1/2" Wing – Female – See Note #1 – Please Confirm Fitting Part #
Mud Flaps	Style	Titan Black Rubber
	Location	Rear
Mud Flaps – Landing Gear		None
Paint	Body – Color	Natural Aluminum
	Run – Gear	Titan Silver
	Hub / Drum	Same as Running Gear
	Rims or Disc	Aluminum
Light Package (Plug Form)		3 marks per side (includes corner mitre & midturn). At Rear: 3 per side 4" dia in door, & 5 rect. clearance at top
	Option #1	Install rear taillights in door with license plate light
	Option #2	Hazard style midturn below sidewall
Access	Catwalk	None
	J-Ladder-Frt	Middle
	J-Ladder Rear	None
	Steps-Frt-Out	None
	Steps-Frt-Ins	None
	Steps-Rear	Titan Cast steps located center on outside of rear door



**Additional Specifications:**

- 1.) 132" – 1" hoses to be installed with wing fittings. Hose hanger bracket on roadside front.
- 2.) Provide hinged air & electrical plate for easy access. Hydraulics are accessible via flip up shedder.
- 3.) King pin to rear axle center line is 44' 6".
- 4.) Hubodometer in miles on front primary axle.

Weight: 20,545 lbs +/- 3%

Cubic Yards: 128 cubic yards

**\*\* Note – For every inch of height added; add 1.25 cu yds**

**Special Discount Price**

*FOB Mitchellville, Iowa*

*No FET included*

*No sales tax or license included if applicable*

**\$105,659.00 each**

\_\_\_\_\_  
Signature of Acceptance

\_\_\_\_\_  
Date

\_\_\_\_\_  
Purchase Order #

Jim Rohr, President  
Ken's Truck Repair, Inc.

**Metro Waste Authority Board**  
**Monthly Board Meeting**  
**October 21, 2020**  
**AGENDA ITEM 9**

---

**ITEM:**

Approval of Land Acquisition for Metro Park West Landfill.

**SUMMARY:**

There is currently one access point for staff, visitors, and trucks to access Metro Park West Landfill (MPW). This access is the main entrance of the Landfill, located off 337<sup>th</sup> Street. The primary use of the proposed land for acquisition, with entry from the north side off 335<sup>th</sup> Street, is to create an alternate access road into the facility. The property owner has agreed to sell Metro Waste Authority (MWA) 2.93 acres for creating this secondary access road.

**DISCUSSION POINTS:**

On August 10, 2020, the property owner received approval from Boone County Land Division to split the property, allowing the owner to sell 2.93 acres to MWA for use as a secondary access road to MPW. The 2.93 acres are shown in the attached Boone County Land Division Determination approval and GIS map. This approval is good for one year from the date of approval.

Current access to MPW utilizes A Avenue from the west of the site. Operationally, ingress and egress from MPW is limited by continuing to only utilize the existing access road off of A Avenue. Acquiring the land would provide appropriate customer access from the north, improve operational efficiency, and provide the access necessary for progression of current waste filling and future landfill cell development.

Upon Board approval of the purchase, a surveyor would complete the survey and MWA would take final actions to complete the purchase.

**STAFF RECOMMENDATION:**

Staff recommends approval of the land acquisition to create a secondary access road into Metro Park West Landfill.

**BUDGET REQUIREMENTS:**

MWA and the current property owner set the per acre purchase price of \$10,500.

Final Purchase Price for 2.93 acres is \$30,765. Funds are available in the FY20/21 budget.

**ATTACHMENTS:**

Attachment A: Purchase Agreement  
Attachment B: Boone County Land Division Determination Approval  
Attachment C: Boone County GIS  
Attachment D: MPW Parcel Boundaries with Property Split

**CONTACT:**

Michael McCoy, executive director, 515.323.6519



## OFFER TO BUY REAL ESTATE AND ACCEPTANCE (NONRESIDENTIAL)

TO: Ella Pennington (Sellers)

The undersigned BUYERS hereby offer to buy and the undersigned SELLERS by their acceptance agree to sell the real property situated in Boone County, Iowa, legally described as:

LOT 1 OF PARCEL C IN NORTH 1/2 of SOUTHWEST 1/4 OF SECTION 31, TOWNSHIP 82 NORTH, RANGE 28 WEST

together with any easements and appurtenant servient estates, but subject to any reasonable easements of record for public utilities or roads, any zoning restrictions customary restrictive covenants and mineral reservations of record, if any, herein referred to as the "Property," upon the following terms and conditions provided BUYERS, on possession, are permitted to use the Property for easement and access roads.

1. PURCHASE PRICE. The Purchase Price shall be \$30,765 and the method of payment shall be as follows: \$ 0.00 with this offer, to be deposited upon acceptance of this offer and held in trust by N/A as earnest money, to be delivered to the SELLERS upon performance of SELLERS' obligations and satisfaction of BUYERS' contingencies, if any; and the balance of the Purchase Price, as follows: Metro Waste Authority Check
2. REAL ESTATE TAXES. Sellers shall pay \$0.00 and any unpaid real estate taxes payable in prior years. Buyers shall pay all subsequent real estate taxes.

Unless otherwise provided in this Agreement, at closing SELLERS shall pay BUYERS, or BUYERS shall be given a credit for, taxes from the first day of July prior to possession to the date of possession based upon the last known actual net real estate taxes payable according to public records. However, if such taxes are based upon a partial assessment of the present property improvements or a changed tax classification as of the date of possession, such proration shall be based on the current levy rate, assessed value, legislative tax rollbacks and real estate tax exemptions that will actually be applicable as shown by the assessor's records on the date of possession.

3. SPECIAL ASSESSMENTS.

- A. SELLERS shall pay in full at time of closing all special assessments which are a lien on the Property as of the date of acceptance, 11/14/30 EAP.
- B. IF "A" is stricken, then SELLERS shall pay at time of closing all installments of special assessments which are a lien on the Property and, if not paid, would become delinquent during the calendar year this offer is accepted, and all prior installments thereof.
- C. All charges for solid waste removal, sewage and maintenance that are attributable to SELLERS' possession, including those for which assessments arise

after closing, shall be paid by SELLERS.

D. Any preliminary or deficiency assessment which cannot be discharged by payment shall be paid by SELLERS through an escrow account with sufficient funds to pay such liens when payable, with any unused funds returned to SELLERS.

E. BUYERS shall pay all other special assessments or installments not payable by SELLERS.

4. **RISK OF LOSS AND INSURANCE.** SELLERS shall bear the risk of loss or damage to the Property prior to closing or possession, whichever first occurs. SELLERS agree to maintain existing insurance and BUYERS may purchase additional insurance. In the event of substantial damage or destruction prior to closing, this Agreement shall be null and void; provided, however, BUYERS shall have the option to complete the closing and receive insurance proceeds regardless of the extent of damages. The property shall be deemed substantially damaged or destroyed if it cannot be restored to its present condition on or before the closing date.

5. **POSSESSION AND CLOSING.** If BUYERS timely perform all obligations, possession of the Property shall be delivered to Buyers on October 23, 2020, and any adjustments of rent, insurance, interest and all charges attributable to the SELLERS' possession shall be made as of the date of possession. Closing shall occur after the approval of title by BUYERS and vacation of the Property by SELLERS, but prior to possession by BUYERS. SELLERS agree to permit BUYERS to inspect the Property within 72 hours prior to closing to assure that the premises are in the condition required by this Agreement. If possession is given on a day other than closing, the parties shall make a separate agreement with adjustments as of the date of possession. This transaction shall be considered closed:

A. Upon the delivery of the title transfer documents to BUYERS and receipt of all funds then due at closing from BUYERS under the Agreement.

B. (If "A" is stricken) Upon the filing of the title transfer documents and receipt of all funds due at closing from BUYERS under the Agreement.

6. **FIXTURES.** Included with the Property shall be all fixtures that integrally belong to, are specifically adapted to or are a part of the real estate, whether attached or detached. Also included shall be the following: N/A. The following items shall not be included: N/A

7. **CONDITION OF PROPERTY.** The property as of the date of this Agreement, including buildings, grounds, and all improvements, will be preserved by the SELLERS in its present condition until possession, ordinary wear and tear excepted. SELLERS make no warranties, expressed or implied, as to the condition of the property.

A. BUYERS acknowledge that they have made a satisfactory inspection of the Property and are purchasing the Property in its existing condition.

B. (If "A" is stricken) Within N/A days after the acceptance of this Agreement, BUYERS may, at their sole expense, have the property inspected by a person or persons of their choice to determine if there are any structural, mechanical, plumbing, electrical, environmental, or other deficiencies. Within this same period, the BUYERS may notify in writing the SELLERS of any deficiency.

The SELLERS shall immediately notify the BUYERS in writing of what steps, if any, the SELLERS will take to correct any deficiencies before closing. The BUYERS shall then immediately in writing notify the SELLERS that (1) such steps are acceptable, in which case this Agreement, as so modified, shall be binding upon all parties; or (2) that such steps are not acceptable, in which case this Agreement shall be null and void, and any earnest money shall be returned to BUYERS.

8. ABSTRACT AND TITLE. SELLERS, at their expense, shall promptly obtain an abstract of title to the Property continued through the date of acceptance of this Agreement, 10/16/20 EP, and deliver it to BUYERS' attorney for examination. It shall show marketable title in SELLERS in conformity with this Agreement, Iowa law, and title standards of the Iowa State Bar Association. The SELLERS shall make every reasonable effort to promptly perfect title. If closing is delayed due to SELLERS' inability to provide marketable title, this Agreement shall continue in force and effect until either party rescinds the Agreement after giving ten days written notice to the other party. The abstract shall become the property of BUYERS when the Purchase Price is paid in full. SELLERS shall pay the costs of any additional abstracting and title work due to any act or omission of SELLERS, including transfers by or the death of SELLERS or their assignees. Unless stricken, the abstract shall be obtained from an abstracter qualified by the Guaranty Division of the Iowa Housing Finance Authority.

9. SURVEY. If a survey is required under Iowa Code Chapter 354, or city or county ordinances, SELLERS shall pay the costs thereof. BUYERS may, at BUYERS' expense prior to closing, have the property surveyed and certified by a registered land surveyor. \_\_\_\_\_ If the survey shows an encroachment on the Property or if any improvements located on the Property encroach on lands of others, the encroachments shall be treated as a title defect.

#### 10. ENVIRONMENTAL MATTERS.

A. SELLERS warrant to the best of their knowledge and belief that there are no abandoned wells, solid waste disposal sites, hazardous wastes or substances, or underground storage tanks located on the Property, the Property does not contain levels of radon gas, asbestos, or urea-formaldehyde foam insulation which require remediation under current governmental standards, and SELLERS have done nothing to contaminate the Property with hazardous wastes or substances. SELLERS warrant that the property is not subject to any local, state, or federal judicial or administrative action, investigation or order, as the case may be, regarding wells, solid waste disposal sites, hazardous wastes or substances, or underground storage tanks. SELLERS shall also provide BUYERS with a properly executed GROUNDWATER HAZARD STATEMENT showing no wells, private burial sites, solid waste disposal sites, private sewage disposal system, hazardous waste and underground storage tanks on the Property unless disclosed here:

B. BUYERS may at their expense, within seven (7) days after the date of acceptance, obtain a report from a qualified engineer or other person qualified to analyze the existence or nature of any hazardous materials, substances, conditions

or wastes located on the Property. In the event any hazardous materials, substances, conditions or wastes are discovered on the Property, BUYERS' obligation hereunder shall be contingent upon the removal of such materials, substances, conditions or wastes or other resolution of the matter reasonably satisfactory to BUYERS. However, in the event SELLERS are required to expend any sum in excess of \$ 100,000 to remove any hazardous materials, substances, conditions or wastes, SELLERS shall have the option to cancel this transaction and refund to BUYERS all earnest money paid and declare this Agreement null and void. The expense of any inspection shall be paid by BUYERS. The expense of any action necessary to remove or otherwise make safe any hazardous material, substances, conditions or waste shall be paid by SELLERS, subject to SELLERS' right to cancel this transaction as provided above.

11. DEED. Upon payment of the Purchase Price, SELLERS shall convey the Property to BUYERS by warranty deed, free and clear of all liens, restrictions, and encumbrances except as provided in this Agreement. General warranties of the title shall extend to the time of delivery of the deed excepting liens and encumbrances suffered or permitted by BUYERS.
12. JOINT TENANCY IN PROCEEDS AND IN REAL ESTATE. If SELLERS, immediately preceding acceptance of the offer, hold title to the Property in joint tenancy with full rights of survivorship, and the joint tenancy is not later destroyed by operation of law or by acts of the SELLERS, then the proceeds of this sale, and any continuing or recaptured rights of SELLERS in the Property, shall belong to SELLERS as joint tenants with full rights of survivorship and not as tenants in common; and BUYERS in the event of death of any SELLER, agree to pay any balance of the price due SELLERS under this contract to the surviving SELLERS and to accept a deed from the surviving SELLERS consistent with Paragraph 15.
13. JOINDER BY SELLER'S SPOUSE. SELLER'S spouse, if not a title holder immediately preceding acceptance, executes this Agreement only for the purpose of relinquishing all rights of dower, homestead and distributive share or in compliance with Section 561.13 of the Code of Iowa and agrees to execute the deed or real estate contract for this purpose.
14. STATEMENT AS TO LIENS. If Buyers intend to assume or take subject to a lien on the Property, SELLERS shall furnish BUYERS with a written statement prior to closing from the holder of such lien, showing the correct balance due.
15. USE OF PURCHASE PRICE. At time of settlement, funds of the Purchase Price may be used to pay taxes and other liens and to acquire outstanding interests, if any, of others.
16. APPROVAL OF COURT. If the Property is an asset of an estate, trust or conservatorship, this Agreement is contingent upon Court approval unless Court approval is not required under Iowa law and title standards of the Iowa State Bar Association. If the sale of the Property is subject to Court approval, the fiduciary shall promptly submit this Agreement for such approval. If this Agreement is not so approved by \_\_\_\_\_ either



party may declare this Agreement null and void, and all payments made hereunder shall be made to BUYERS.

**17. REMEDIES OF THE PARTIES.**

A. If BUYERS fail to timely perform this Agreement, SELLERS may forfeit it as provided in the Iowa Code (Chapter 656), and all payments made shall be forfeited; or, at SELLERS' option, upon thirty days written notice of intention to accelerate the payment of the entire balance because of BUYERS' default (during which thirty days the default is not corrected), SELLERS may declare the entire balance immediately due and payable. Thereafter this Agreement may be foreclosed in equity and the Court may appoint a receiver.

B. If SELLERS fail to timely perform this Agreement, BUYERS have the right to have all payments made returned to them.

C. BUYERS and SELLERS are also entitled to utilize any and all other remedies or actions at law or in equity available to them, and the prevailing parties shall be entitled to obtain judgment for costs and attorney fees.

**18. NOTICE.** Any notice under this Agreement shall be in writing and be deemed served when it is delivered by personal delivery or mailed by certified mail, addressed to the parties at the addresses given below.

**19. GENERAL PROVISIONS.** In the performance of each part of this Agreement, time shall be of the essence. Failure to promptly assert rights herein shall not, however, be a waiver of such rights or a waiver of any existing or subsequent default. This Agreement shall apply to and bind the successors in interest of the parties. This Agreement shall survive the closing. This Agreement contains the entire agreement of the parties and shall not be amended except by a written instrument duly signed by SELLERS and BUYERS. Paragraph headings are for convenience of reference and shall not limit or affect the meaning of this Agreement. Words and phrases herein shall be construed as in the singular or plural number, and as masculine, feminine or neuter gender according to the context.

**20. NO REAL ESTATE AGENT OR BROKER.** Neither party has used the service of a real estate agent or broker in connection with this transaction.

**21. CERTIFICATION.** Buyers and Sellers each certify that they are not acting, directly or indirectly, for or on behalf of any person, group, entity or nation named by any Executive Order or the United States Treasury Department as a terrorist, "Specially Designated National and Blocked Person" or any other banned or blocked person, entity, nation or transaction pursuant to any law, order, rule or regulation that is enforced or administered by the Office of Foreign Assets Control; and are not engaged in this transaction, directly or indirectly on behalf of, any such person, group, entity or nation. Each party hereby agrees to defend, indemnify and hold harmless the other party from and against any and all claims, damages, losses, risks, liabilities and expenses (including attorney's fees and costs) arising from or related to my breach of the foregoing certification.

22. INSPECTION OF PRIVATE SEWAGE DISPOSAL SYSTEM. Seller represents and warrants to Buyer that the Property is not served by a private sewage disposal system, and there are no known private sewage disposal systems on the property.

23. ADDITIONAL PROVISIONS.

ACCEPTANCE. When accepted, this Agreement shall become a binding contract. If not accepted and delivered to BUYERS on or before October 1, 2020, this Agreement shall be null and void and all payments made shall be returned immediately to BUYERS. If accepted by SELLERS at a later date and acceptance is satisfied in writing, then this contract shall be valid and binding.

Accepted *Ella Pennington*  
SELLERS

Dated \_\_\_\_\_  
BUYERS

Print Name *ELLA PENNINGTON*  
SS# ~~XXXXXXXXXX~~

Print Name: Metro Waste Authority  
SS# \_\_\_\_\_

Print Name \_\_\_\_\_  
SS# \_\_\_\_\_

Print Name \_\_\_\_\_  
SS# \_\_\_\_\_

Address : *2407 Parkview Pl.*

Address : 300 E. Locust, Suite 100, Des Moines, Iowa 50309

Telephone: *515-465-4069*  
*Perry, Ia. 50226*

Telephone: (515) 244-0021



**BOONE COUNTY  
LAND DIVISION DETERMINATION****PERMIT NO:** 2020-DIV-043**Owner:** 2407 Park View Pl, Perry, IA 50220**Surveyor:** Vobr Niemeyer, LLC / Bus Address: 5340 N. Park Place NE Suite 105 Cedar Rapids  
52402 vnsurveying.com**Other Applicant:** / /**Zoning Information:**

The Planning/Zoning Department has made the following determinations:

**Reason for Division:** Access to landfill**Acres to Divide from Parent Parcel:** 2.93**Legal Description:** PARCEL CN 1/2 SW 1/4**Exception:** Agriculture Use Only**Zoning Approval:** Approved**Zoning Dept Comments:** Used for access road to Metro landfill.**Platting Information:**

The Plat Officer has made the following determinations:

**Plat Officer Approval:** Approved**Land Division Determination:** Property Split**Land Division Comments:****Land Division Determination Notes:**

When the survey is complete, forward it to the Auditor's Office for approval before recording. If your plans change as you complete the process, you will need to amend your application. This determination is valid for one year from the Date Signed. If the survey is not filed by then, you must re-apply.

It is expected that the title of the survey will be comparable to the following:

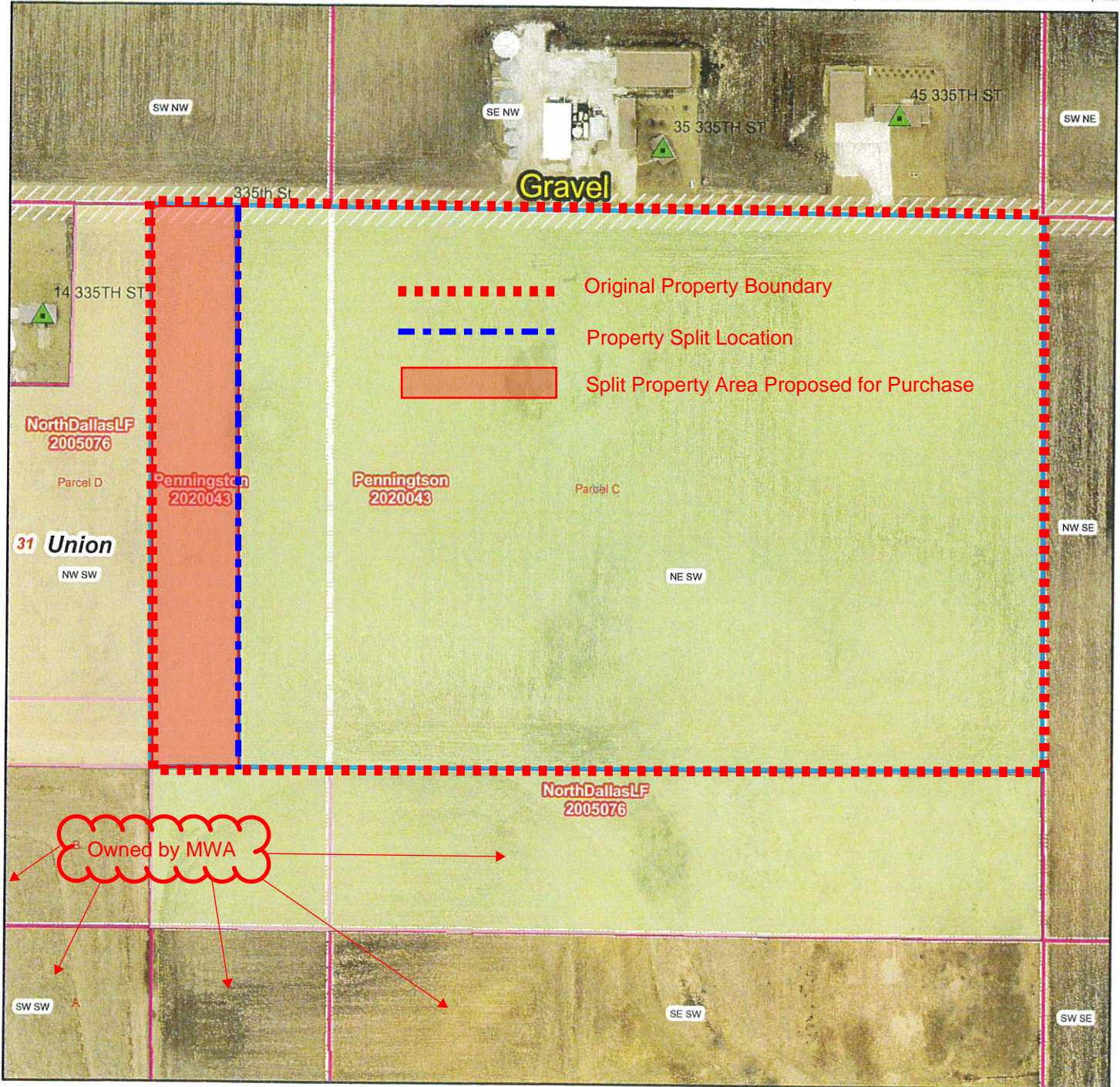
**PLAT OF SURVEY****BOONE COUNTY LAND DIVISION TYPE: Property Split****Lot 1 of Parcel C in N 1/2 SW 1/4 in Section 31 Township 82 N Range 28 W**

For Zoning questions: Planning and Development Dept Phone No. 515.433.0550. For Plat questions: Auditor's Office Phone No. 515-433-0502

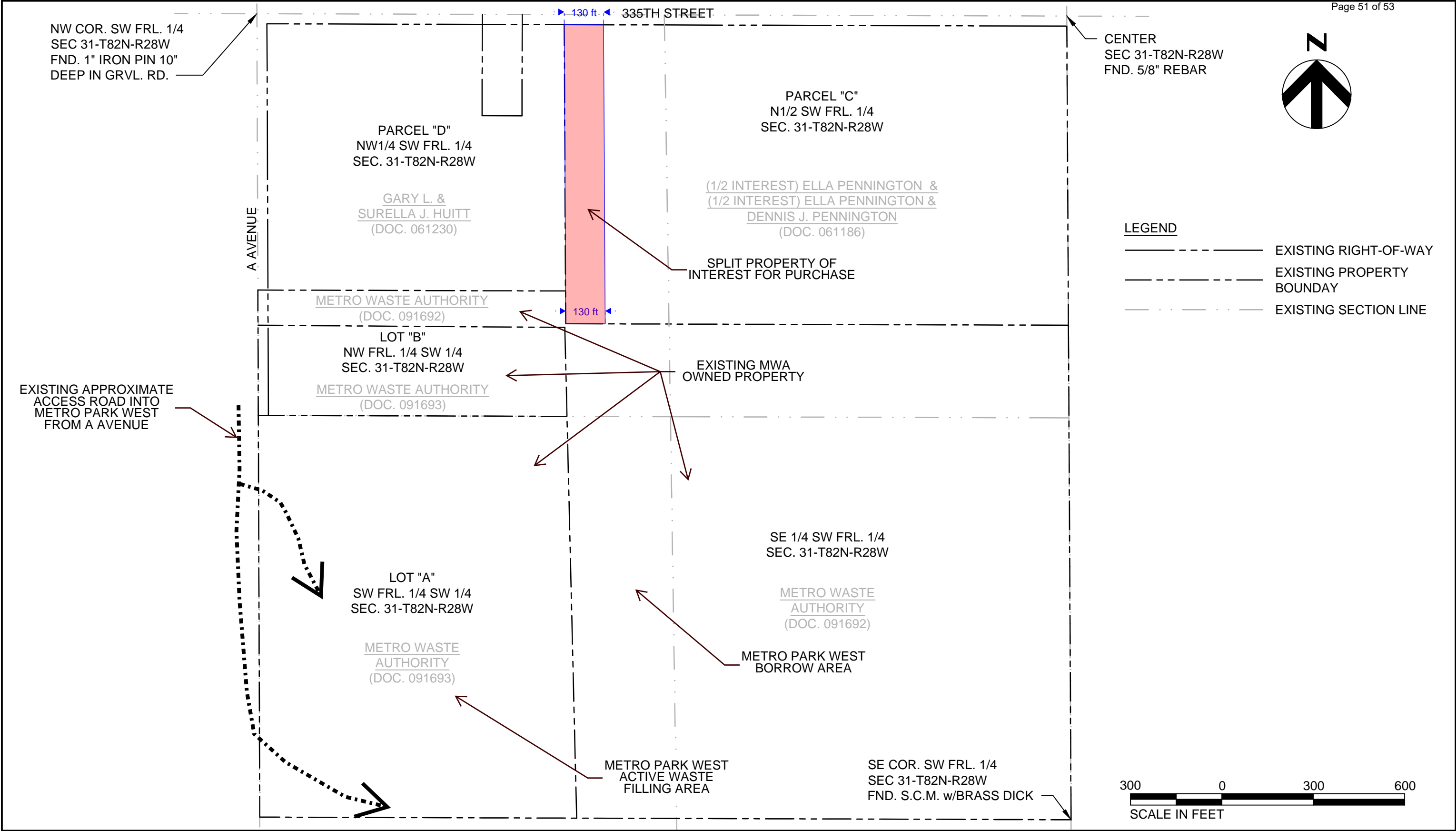
 **Kristin J. Solata**  
County Counsel (Planning & Development) / Board of Code Enforcement Officer

 **Phillip E. Maier**  
Auditor

Date signed: 08/10/2020







C:\Users\mbickford\OneDrive - HDR, Inc\Desktop (OD)\mpw-C101.dwg, Layout1, 8/14/2020 11:12:17 AM, MBICKFORD



**METRO WASTE AUTHORITY  
METRO PARK WEST**

LAND RECORD SPLIT

DATE  
AUGUST 2020

FIGURE  
1

**Metro Waste Authority Board**

**Monthly Board Meeting**

**October 21, 2020**

**AGENDA ITEM 10**

---

**ITEM:**

Public Hearing to Approve the Plans, Specifications, Form of Contract and Cost Estimate for the Material Recovery Facility and to Award Bidders for Bid Packages 01-11.

Approval of Material Recovery Facility Prime Contractors.

**SUMMARY:**

Notice of a public hearing has been published on proposed bid packages for the construction of the material recovery facility (MRF).

**DISCUSSION POINTS:**

Bid documents for the MRF were released September 17, 2020. Metro Waste Authority sought bids from qualified and experienced prime contractors for eleven divisions of construction, which include site/utilities, footings/slabs, landscaping, paving, precast/steel, roofing/flashing, glazing/exterior panels, general construction, elevator, mechanical, and electrical. Bid-opening took place October 15, 2020.

**STAFF RECOMMENDATION:**

Staff recommends the approval of material recovery facility plans, specifications, form of contract, cost estimate, as well awarding bid packages 01-11 to the identified apparent low prime contractors.

**BUDGET REQUIREMENTS:**

There are no additional budget requirements, as the projected construction budget with apparent low bidders is under the previously approved cost estimate budget.

**ATTACHMENTS:**

Attachment A: Bid Tab

**CONTACT:**

Michael McCoy, executive director, 515.323.6519

Jake Christensen, Christensen Development, 515.528.9559

Adam Douglas, Graham Construction, 515.645.9526

**ARCHITECT: ISG**  
**CONSTRUCTION MANAGER: Graham Construction**  
**BID DATE: 10/15/20**  
**TIME: 3:00**



### Metro Waste Authority - Material Recovery Facility

			Alternates					
Bid Pkg	Distription	Bid Total	BP-1 UP 2	1	2	3	4	5
1	Site/Utilities							
	McAninch	\$1,304,500						
2	Footing/Slabs							
	Rochon	\$2,348,000						
3	Landscaping							
	Alpha	\$237,862						
4	Site Paving							
	CTI	\$976,440						
5	Precast/Steel							
	PDM	\$3,096,305						
6	Roofing/Flashing							
	Central States	\$386,000						
7	Glazing/Exterior Panels							
	Architectural Wall System	\$487,800						
8	General Construction							
	Rochon	\$1,598,000						
9	Elevator							
	Schumacher	\$94,646						
10	Mechanical							
	Excel	\$1,525,000						
11	Electrical							
	TriCity	\$1,053,210						
		\$13,107,763	\$0	\$0	\$0	\$0	\$0	\$0